



unforgettable

GATHERINGS



A sophisticated stay and play destination with luxury accommodations, dining, entertainment, and special events with intuitive service and individually tailored experiences.

Thompson Austin offers 212 guestrooms and suites, 17 residences, and over 10,000 square feet of meeting and event space, with a thoughtfully curated design approach that celebrates Austin's rebellious spirit.



the hotel

OVERVIEW

- 15 floors
- 178 king rooms
- 20 queen-queen rooms
- 14 Suites including a Thompson Suite
- 17 residences with kitchen and washer/dryer
- Valet parking
- 10 EV charging stations
- Complimentary bike storage
- Pet friendly
- LEED Silver Target3-Star Austin Energy Green Building



GUESTROOM FEATURES

- Floor-to-ceiling windows
- 400 thread count SFERRA linens
- Custom Sealy Tempur-Pedic mattress created exclusively for Thompson Hotels
- Plush oversized Thompson signature robes
- Exclusive D.S. & Durga bath amenities
- State of the art rain shower
- Blue tooth connected speakers
- Locally curated honor bar
- 55"+ Samsung Smart TV
- Individually-controlled heat and air conditioning
- Laptop compatible in-room safe

HOTEL AMENITIES

- 4th floor rooftop play deck
- Mosaic art tiled infinity pool
- Luxe cabanas
- 6,700 sq ft wellness center
 - Private studios
 - Peloton bikes
 - Sports simulator
- Thompson Austin Uncovered: Local partnerships and guest perks



DINING + ENTERTAINMENT

Thompson Austin's renowned chef partners bring their original concepts to our culinary spaces tantalizing the palate and invigorating the senses with fresh, regionally-sourced ingredients, notable talent and local handcrafted finds.

- The Grey Market and Diner Bar by award winning duo Chef Mashama Bailey and Johnno Morisano
- In-Room Dining by The Grey Market and Diner Bar
- Wax Myrtle's Club and Pool (4th Floor rooftop);
 - Signature restaurant and bar
 - Game room
 - Private dining room
 - Poolside dining
 - Bayberry Room and Patio with acoustic stage (4,500 sq ft)



MEETING/EVENT MENU SNEAK PEEK

Breakfast tacos

Start your group's day off right in true Texas style. This crowd-pleasing buffet includes a build-your-own taco bar with scrambled eggs, bacon and sausage, corn tortillas, and a wide variety of regional toppings.

Breaks

Amp up your morning coffee break with our Coffee Shop selection which includes cold brew coffee, biscotti, scones, and a variety of sweeteners and creamers.

Lunch

If salads or sandwiches aren't your group's preference, our hot lunch buffet includes a choice of two proteins such as salmon in chili-coriander sauce and flank steak topped with chimichurri served alongside two sides like a southern-style mac & cheese and roasted vegetables. Complete the meal with something sweet: opt for a scoop of berry trifle!

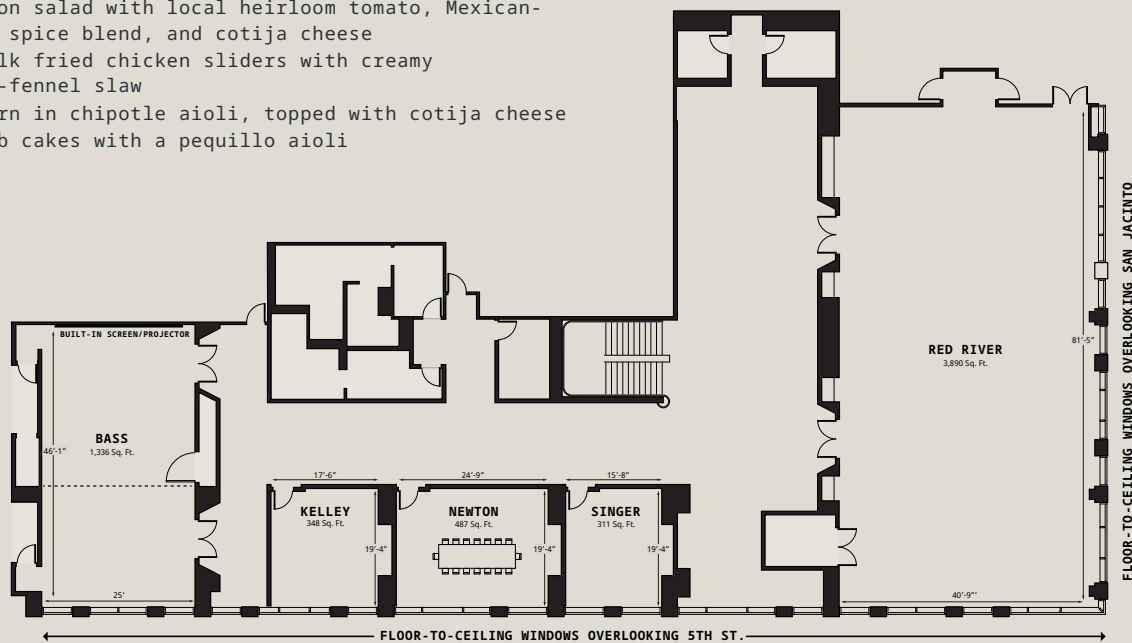
Reception bites with regional flair

Passed or plated appetizers with familiar favorites, such as:

- Deviled eggs topped with crispy pancetta and pickled chile
- Watermelon salad with local heirloom tomato, Mexican-inspired spice blend, and cotija cheese
- Buttermilk fried chicken sliders with creamy cilantro-fennel slaw
- Sweet corn in chipotle aioli, topped with cotija cheese
- Gulf crab cakes with a pequillo aioli

EVENT SPACE

It is impossible not to feel the drama within our 6,300 sq ft of breathtaking event space with 20-foot ceilings and windows. There is simply nothing else like it in this capital city - an exhilarating vision conceived as a special place for unforgettable gatherings curated with intention and intensity, guided by effortless hospitality and service. Untamed in the heart of Austin, Thompson brings you a worldly yet local rendezvous for some serious revelry.



ROOM NAME	SQ. FT.	DIMENSIONS	CEILING HEIGHT	THEATER	CLASSROOM	CONFERENCE	U-SHAPE	H-SQUARE	8/10 ROUNDS	TRADE SHOW	RECEPTION	NOTE
RED RIVER BALLROOM	3,890	85' x 45'	17'1" - 19'6"	350	160	-	-	-	160/200	24	200	Max Sets will require rental of additional tables/chairs *Does not include stage or AV
RED RIVER PRE-FUNCTION	1,587	69' x 23'	19'6"	-	-	-	-	-	-	10	100	
BASS BALLROOM	1,336	47'5" x 28'	17'1" - 19'6"	120	63	36	33	42	72/290	8	65	AV Available to rent
BASS BALLROOM I	756	27' x 28'	17'1" - 19'6"	48	32	18	21	24	32/40	4	25	AV Available to rent
BASS BALLROOM II	580	21' x 28'	17'1" - 19'6"	36	18	18	15	18	24/30	3	18	
BASS PRE-FUNCTION	368	46' x 8'	19'6"	-	-	-	-	-	-	2	60	
KELLEY BOARDROOM	348	19'4" x 17'6"	12'	27	18	12	15	12	16/20	2	30	
KELLEY PRE-FUNCTION	265	13' x 20'4"	19'6"	33	-	-	-	-	16/20	1	30	
NEWTON BOARDROOM	487	19'4" x 24'9"	12'	-	-	12	-	-	-	0	-	Fixed Board Table
NEWTON PRE-FUNCTION	358	13' x 27'6"	19'6"	-	-	-	-	-	-	2	60	
SINGER BOARDROOM	311	19'4" x 15'8"	12'	24	12	12	9	12	8/10	1	20	For Conference at max set there will be backs to the monitor
SINGER PRE-FUNCTION	260	13' x 20'	19'6"	-	-	-	-	-	-	1	40	

experience

TEAM BUILDING

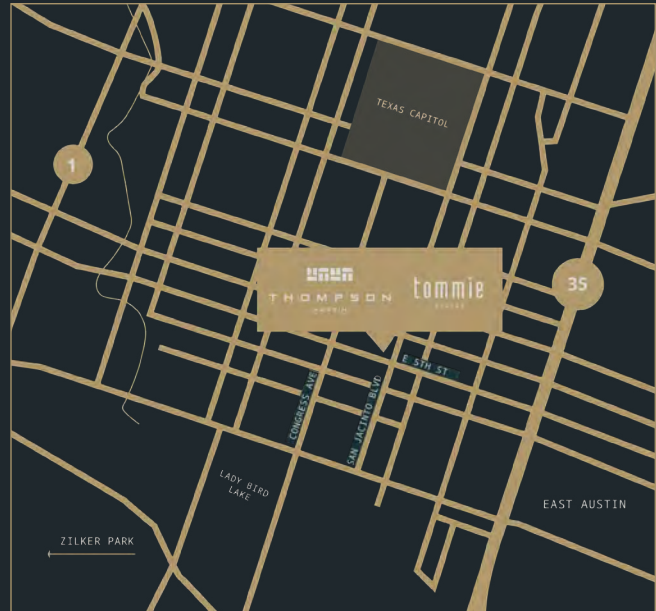
On and offsite experiences are made easy with our talented staff and great location. Options could include:

- Group or individual yoga sessions in our 6,700 sq ft wellness center
- Curated art walks
- Local scavenger hunt
- Cocktail classes curated by Land & Sea Departments' renowned female craft cocktailers
- On or off premise Texas wine tasting or coffee tasting experiences
- Pedicab private brewery tours
- Paddleboarding, kayaking, or boating at Lady Bird Lake
- Art & architecture bicycling tours
- View the bats at the Congress Bridge
- Take in music or a comedy show on 6th St, Rainey St, or in the Red River Cultural District

SUSTAINABILITY

From the building to our operations and employee standards, we have kept sustainability at the forefront of mind throughout conceptualization. Practices include but are not limited to:

- LEED Building Certification is pending
- Smart Thermostats in every guest room
- Smart Lighting Systems with LED bulbs throughout
- Low Flow Plumbing Fixtures throughout
- High Efficiency/High R-Value Glass throughout the building
- 30% of roof is Green Space
- Use of eco-safe cleaning products
- Use of compostable products for takeaway food service
- Recycling and composting of all applicable waste items
- Standard of being a linen-less property in meetings, banquets and restaurants to reduce water and energy demand



NEARBY

Austin Culture

- Mexic-Arte Museum
- The Contemporary Austin
- Blanton Museum of Art
- Street Murals

Austin Live

- Antone's Nightclub
- Stubb's BBQ
- Zilker Hillside Theater
- Paramount Theatre
- Moody's Waterloo Park
- ACL Live at the Moody Theater
- The Continental Club

Austin Imbided

- Wine Tasting in Texas Hill Country
- Craft Brewery Tour
- Guided Taco Tour
- Olive Orchard and Olive Mill Tour

Austin Outdoors

- Barton Springs or Deep Eddy Pools
- Lady Bird Lake
- South Congress Bridge Bats
- Zilker Park
- Biking Tours

Thompson Austin Sales
austinsales@thompsonhotels.com

