

**HYATT**  
**REGENCY™**  
THRISSUR

### ACCOMODATION

- A total of 77 modern guest rooms, including 7 suites and 1 presidential suite offering contemporary facilities, where guests can conduct business or relax in total comfort

### ACCOMODATION FEATURES

- King-size or Twin Beds
- Charging Sockets
- Complimentary Wi-Fi
- 55-inch LED Smart TV
- Spacious Work Desk
- Telephone
- Shower, Modern Bath Amenities
- Tea and Coffee Making Facilities
- Iron and Ironing Board
- Shoeshine Service on request
- Minibar and In-room Safe

### HOTEL SERVICES

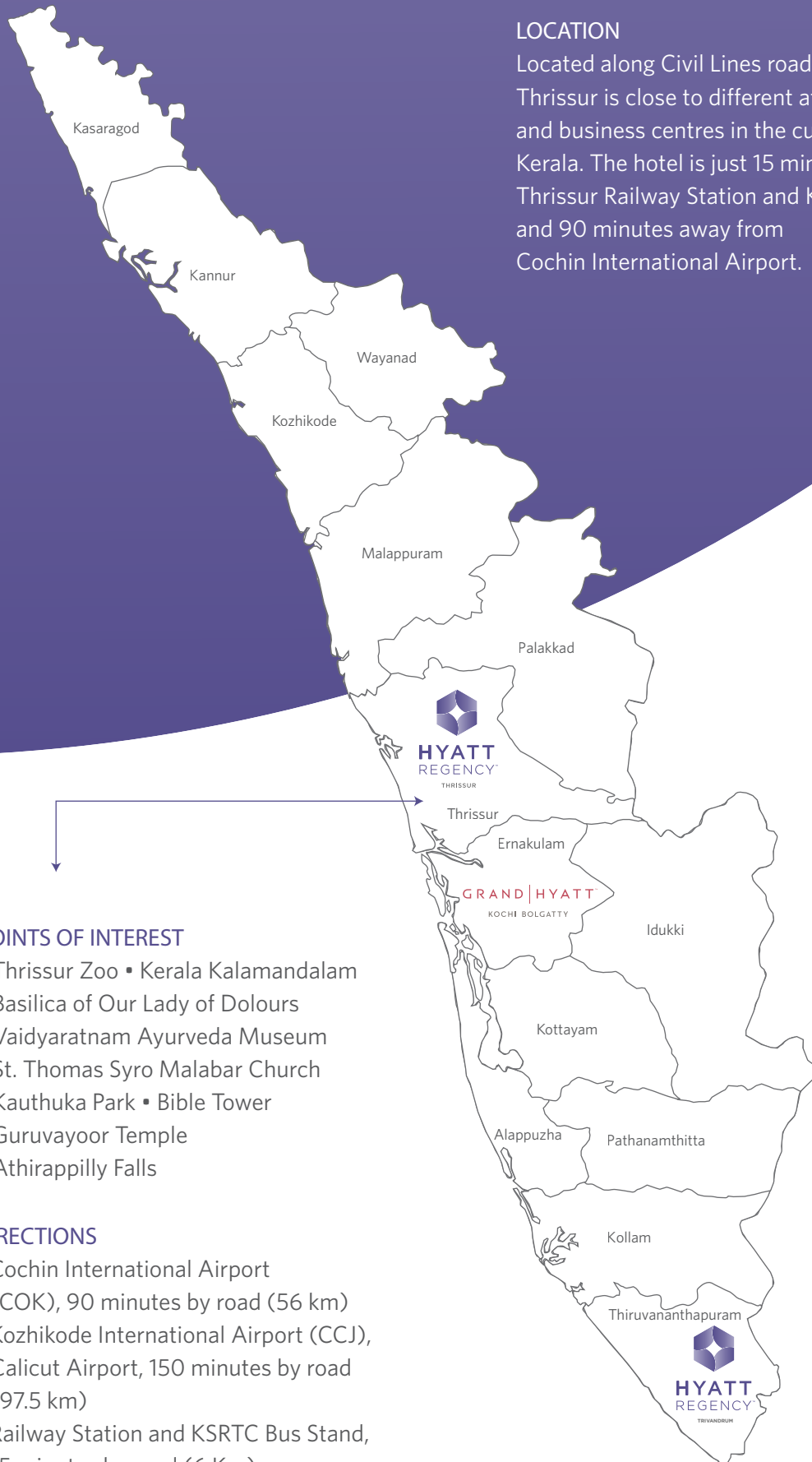
- In-room Dining
- Concierge
- Valet Parking and Car Rentals
- Laundry and Dry Cleaning
- Doctor on call
- Currency Exchange
- Butler Services on request
- Business Centre
- Rooms suitable for guests with special needs
- Safe-deposit Boxes at front desk

### RESTAURANTS

- Regency Café - All day dining restaurant serving modern interpretation of Indian, Middle-Eastern and Asian cuisine
- Nougat - Specialty gourmet offering and a place to connect over a cup of coffee or garden estate tea. Nougat also offers a selection of desserts and savouries available to dine-in or to-go

### RECREATIONAL FACILITIES

- Outdoor Swimming Pool with Kids Pool
- Island Gardens including a Waterside Orchard, Yoga lawns and Spice Garden
- Hair and Beauty Salon
- Spa
- 24-hour Fitness Centre
- Steam Bath
- Yoga Room



## LOCATION

Located along Civil Lines road, Hyatt Regency Thirissur is close to different attractions and business centres in the cultural capital of Kerala. The hotel is just 15 minutes away from Thirissur Railway Station and KSRTC Bus Stand, and 90 minutes away from Cochin International Airport.

## POINTS OF INTEREST

- Thrissur Zoo • Kerala Kalamandalam
- Basilica of Our Lady of Dolours
- Vaidyaratnam Ayurveda Museum
- St. Thomas Syro Malabar Church
- Kauthuka Park • Bible Tower
- Guruvayoor Temple
- Athirappilly Falls

## DIRECTIONS

- Cochin International Airport (COK), 90 minutes by road (56 km)
- Kozhikode International Airport (CCJ), Calicut Airport, 150 minutes by road (97.5 km)
- Railway Station and KSRTC Bus Stand, 15 minutes by road (6 Km)
- Sobha City Mall, 5 minutes by road (1.8 km)

## MEETING & EVENT SPACE

- Kerala's largest convention complex spread over 96,000 square feet (8918.6 square metres)
- Pearl - A grand ballroom with Inbuilt Stage, Green Room and Media Hub spread over 20, 929 square feet (1946 square metres)
- Regency - A palatial ballroom of 11, 750 square feet (1092 square metres) with in-built stage and separate green rooms for men and women
- Opal - A large ballroom of 10, 639 square feet (989 square metres)
- Regal - A pillarless ballroom of 9, 275 square feet (862 square metres) that can accommodate up to 900 guests in reception style
- Sapphire - A hall of 7, 769 square feet (722 square metres)
- Amber - A ballroom of 7, 098 square feet (660 square metres)
- Nattika - A hall of 2, 378 square feet (221 square metres)
- Prayer Areas:
  - #1 - 1876 square feet (174 square metres)
  - #2 - 1480 square feet (138 square metres)
- VIP Lounges:
  - Ruby - 560 square feet (52 square metres)
  - Kerala Majlis - 484 square feet (45 square metres)
- 9 state-of-the-art meeting and convention spaces including two divisible rooms



## BANQUET FACILITIES

- All meeting rooms are equipped with the latest audio-visual equipment
- High-speed internet access available in all meeting rooms
- Off-premise catering available

## SERVICES AND FACILITIES

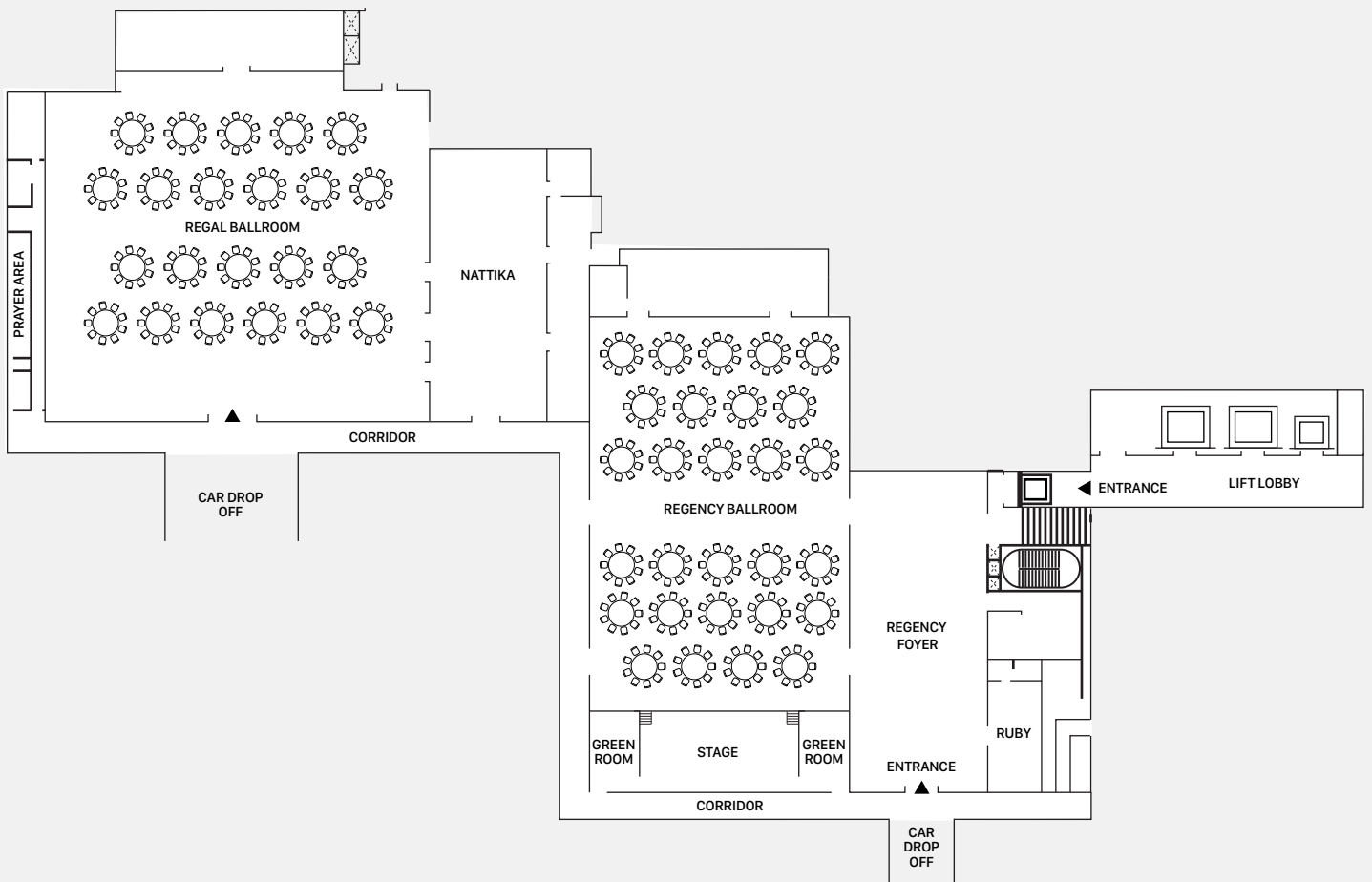
- Airport Transfers
- 24-hour Business Centre
- Concierge Service
- Chauffeur Service
- Currency Exchange
- Laundry and Dry Cleaning Services
- Babysitting Service
- Separate Male and Female Prayer Rooms
- Car Wash
- Helipad
- Convention Parking Area for 600 Cars
- Parking Bay
- Team Members' Car Parking
- Open Parking







**HYATT**  
**REGENCY™**  
THRISSUR

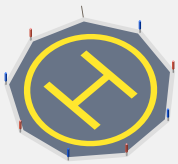
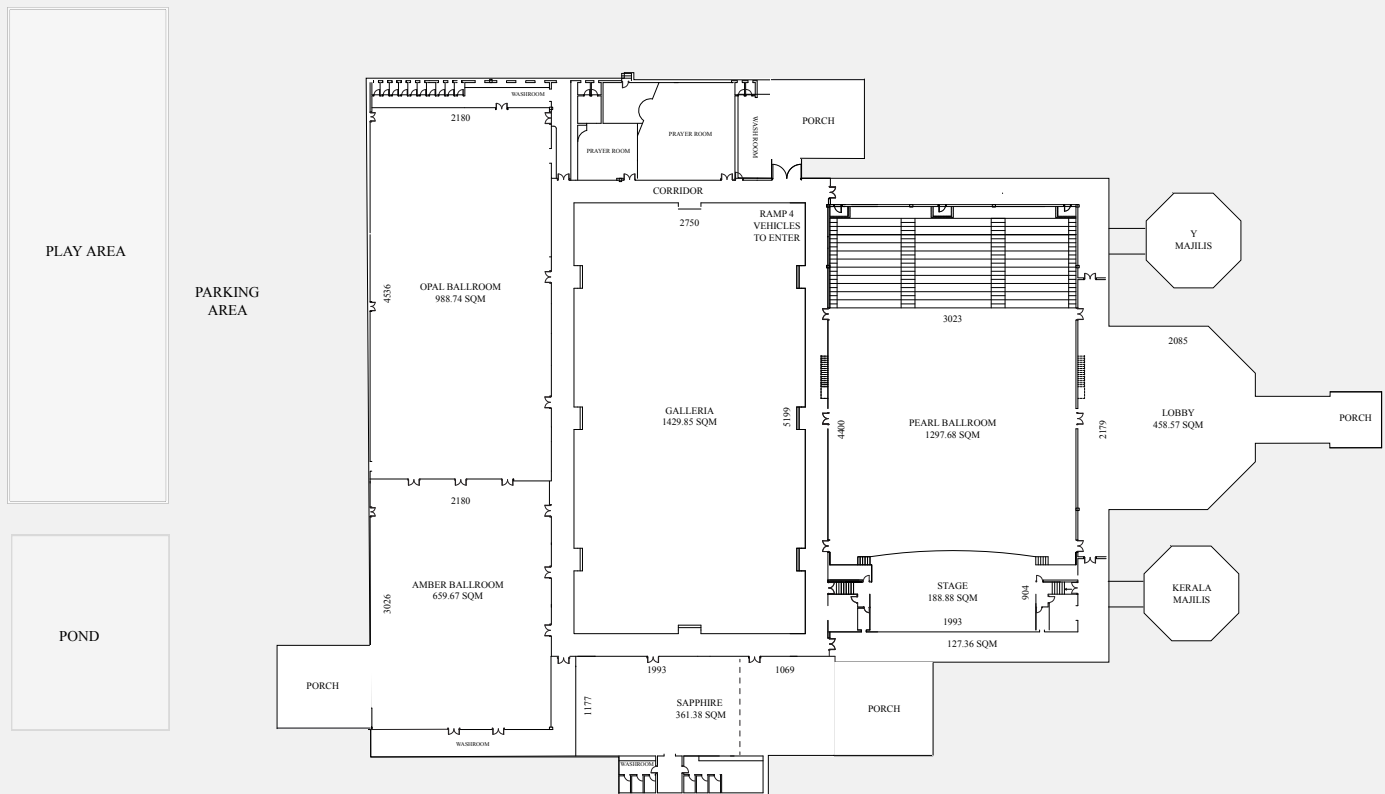




**HYATT**  
**REGENCY™**  
THRISSUR



## FLOOR PLAN Ground Level



HELIPAD

**LICC**  
by  
**HYATT REGENCY™**  
THRISSUR