



OVERVIEW



Nestled on a private white sand beach, Park Hyatt Sanya Sunny Bay Resort is a true sanctuary, combining luxury and exclusivity with the ease of accessibility. Chi flows unhindered between ocean and mountains throughout this modernist masterpiece designed by award-winning architect Jean-Michel Gathy. Fortune Bay, a nearby national soft coral preserve, boasts the best dive conditions in China.

ACCOMMODATION

- 205 rooms including 26 suites and 17 villas with panoramic views of the South China Sea
- Rooms ranging from 62m² - 240m²
- Wireless and wired broadband high-speed Internet access
- Spa-inspired bathroom with an oversized rain shower and deep-soaking tub
- Flat screen television with cable / satellite programmes
- Espresso machine
- Personal bar
- Dual-line telephones
- Mood lighting
- Hair dryer
- Automated blinds
- Daily newspaper
- Designer bathroom amenities, luxurious linen, bathrobes, yukata and slippers

RESTAURANTS

- Dining Room – A home style venue, overlooking Sunny Bay with indoor and outdoor seating offering Chinese style seafood
- Pool House – Pizzas, pastas, grilled meats and seafood from the open kitchen, accompanied by views of Sunny Bay
- Tea House – A casual dining venue showcasing premium selection of Chinese teas and Chinese comfort food
- Cellar – Semi private dining in an intimate setting offering Chinese Cuisine and premium wines
- Terrace – Cocktails, premium whiskies, cigars and snacks in an elegant indoor and outdoor setting with spectacular views of Sunny Bay
- Library – A venue for personal time or social gathering, where our guests can read and relax throughout the day and evening
- Pool Bar – Fresh juices, cocktails and snacks in a dramatic lotus shaped setting
- 24-Hour In Room Dining – Our in room dining offerings showcase a healthy balance menu, breakfast offerings, Western and Chinese comfort dishes and premium selection of beverages

MEETINGS AND CONVENTIONS

- 1,475m² of flexible meeting space in total
- Grand Salon on Level 5, a dramatic venue for wedding and gala dinners featuring a 13 metre high ceiling and nature light
- Four Salons including three measuring 30m², which can be used individually or opened up to create one space; plus one measuring 66m²

- Gallery is a long, 231m² space with paintings and sculptures decorating both lengths to resemble an art gallery
- Chamber is an indoor event space, measuring 190m² which comprises of three separate spaces – a reception area, an open kitchen and a main dining area
- Wireless Internet access in all function rooms
- World of Hyatt program available for eligible events
- State-of-the-art audio visual equipment
- Dedicated event planning and service team
- Individual climate control

SERVICES & FACILITIES

- Private bay
- Five pools to suit all types of swimmers
- The Spa at Sunny Bay
- Multilingual Concierge service
- Butler service
- Wireless Internet throughout hotel public areas
- Airport limousine service
- Dry-cleaning, laundry and pressing services
- Shoe-shine service
- Housekeeping service twice daily
- 24-hours room service
- Camp Hyatt
- Outdoor and indoor recreation activities
- Resort center

POINTS OF INTEREST







- Nanshan Buddhism Cultural Tourism Zone
- The Binglanggu Hainan Li and Miao Cultural Heritage Park
- Sanya International Duty Free Center
- Relics of Yazhou Ancient City

5 Sunny Bay Road, Yalong Bay
National Resort District, Sanya,
Hainan Province, China 572000
sanya.park.hyatt.com

T. +86 898 8820 1234
F. +86 898 8860 1234



ROOM DIMENSIONS & CAPACITIES

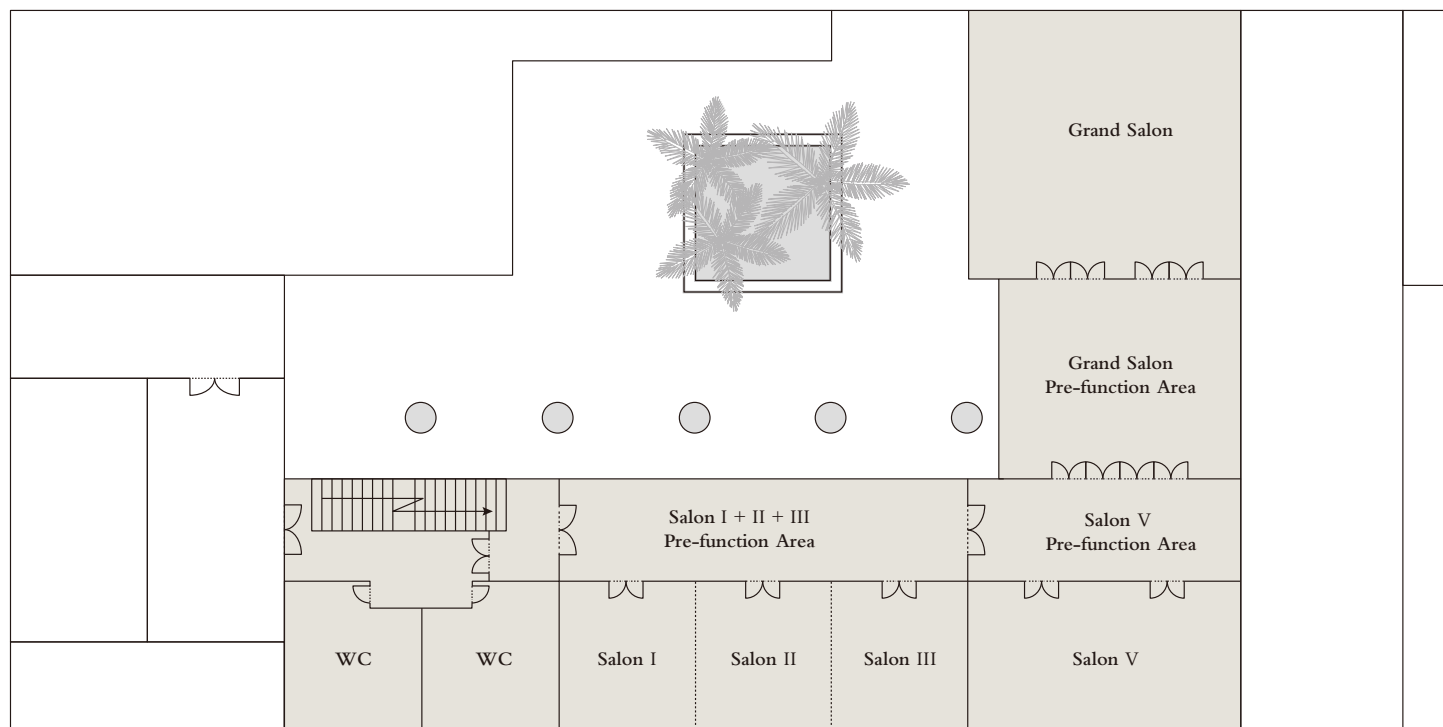
EVENT SPACE	L x W x H (m)	AREA (m ²)	THEATRE-STYLE	CLASSROOM	U-SHAPED	BOARDROOM	ROUND TABLES	COCKTAIL
								
Grand Salon	13 X 13 X 12	169	160	70	32	40	72	150
Grand Salon Pre-function Area	11 X 10 X 6	110	84	40	20	22	40	80
Grand Salon + Pre-function Area	-	279	244	110	52	46	112	200
Salon I / II / III	5 X 6 X 7	30	18	12	10	10	10	20
Salon I + II	11 X 6 X 7	66	48	24	18	20	30	40
Salon II + III	11 X 6 X 7	66	48	24	18	20	30	40
Salon I + II + III	18 X 6 X 7	108	80	40	26	40	50	60
Salon V	11 X 6 X 7	66	64	24	24	22	24	30
Salon I + II + III Pre-function Area	22 X 4	88	-	-	-	-	-	-
Salon V Pre-function Area	13 X 5	65	-	-	-	-	-	-
Library	32 X 11	352	-	-	-	-	-	-
Terrace	-	160	-	-	-	-	-	100
Gallery	33 X 7 X 4	231	216	120	94	84	100	216
Gallery Pre-function Area	6 X 7 X 4	42	-	-	-	-	-	-
Chamber	19 X 10 X 3	190	110	80	46	40	100	150
Chamber Pre-function Area	6 X 9	54	-	-	-	-	-	-

5 Sunny Bay Road, Yalong Bay
National Resort District, Sanya,
Hainan Province, China 572000
sanya.park.hyatt.com

T. +86 898 8820 1234

F. +86 898 8860 1234

FLOOR PLAN & DIRECTIONS



TRANSPORTATION

- From Sanya Phoenix International Airport 40-minute by car (40 km)
- From Sanya Railway Station 35-minute by car (35 km)
- From downtown 35-minute by car (35 km)
- From Haitang Bay 20-minute by car (18 km)



5 Sunny Bay Road, Yalong Bay
 National Resort District, Sanya,
 Hainan Province, China 572000
sanya.park.hyatt.com

T. +86 898 8820 1234
 F. +86 898 8860 1234