



A PARK HYATT WEDDING



the PARK HYATT

AN ELM FRINGED SANCTUARY

Overlooking St. Patrick's Cathedral and Fitzroy Gardens, Park Hyatt Melbourne offers exclusive luxury in the heart of the city. Surrounded by century old elm trees and some of the city's most iconic architecture, Park Hyatt Melbourne is a sanctuary distinctive in location and design, offering guests an exceptional and personalised experience.





our VENUES

FROM GRAND TO INTIMATE

Park Hyatt Melbourne boasts Italian marble interiors and versatile venues, from the Ballroom's 310-guest capacity under a silver dome to the intimate Library for 40. With spaces like the sunlit Trilogy garden and the unique Cuba setting, weddings here start at \$10,000, offering timeless elegance.



BALLROOM – 310 SIT DOWN GUESTS



TRILOGY – 140 SIT DOWN GUESTS



BALLROOM FOYER



TRILOGY GARDEN – 100 CEREMONY GUESTS



FAIRMONT – 100 SIT DOWN GUESTS



CUBA – 32 SIT DOWN GUESTS



FAIRMONT FOYER



RADII BAR



LIBRARY – ROUND TABLES



PARK LOUNGE – TABLE SET UP



LIBRARY – BOARD TABLE



PARK LOUNGE – COCKTAIL SETUP

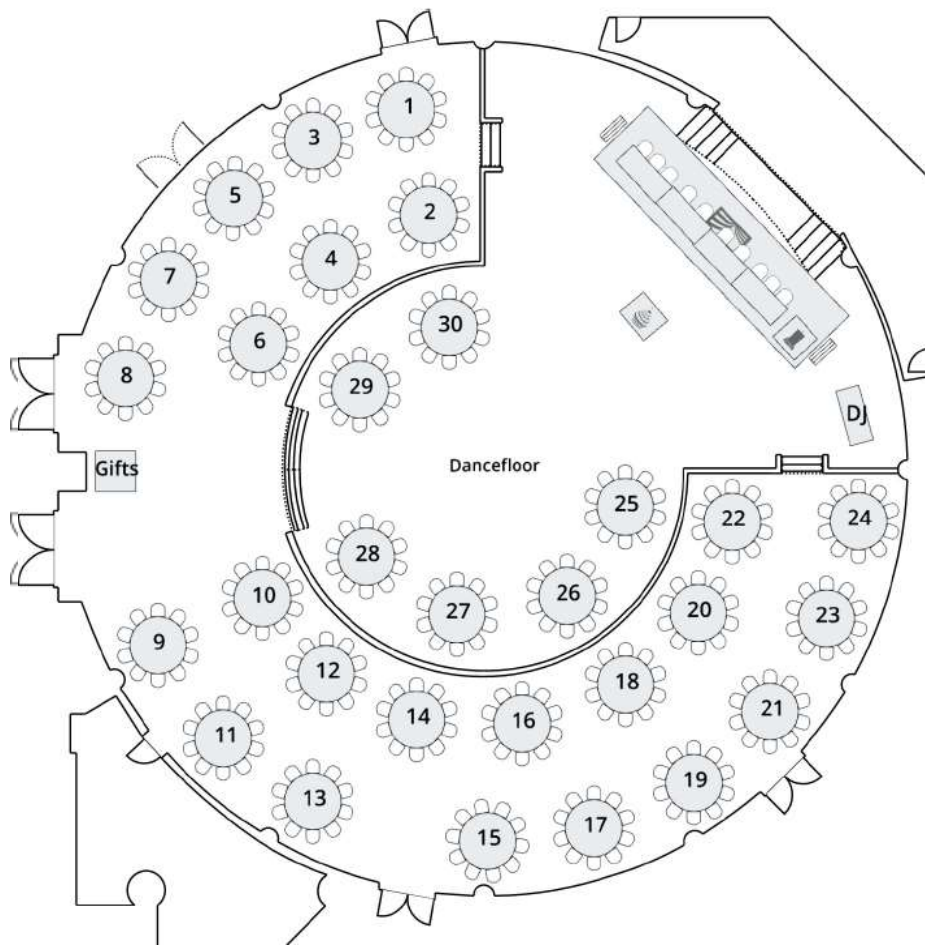
ROOM NAME	DIMENSIONS LxWxH	SQUARE METRES	BANQUET (10 GUESTS)	COCKTAIL	CEREMONY	BOARDROOM (FULLY SET)
						
Ballroom	27d x 5.5h	572	310	400	–	–
Fairmont	20m x 11m x 4.7m	220	100	180	150	48
Library	11.5m x 7m x 4.3m	80	40	50	40	24
Trilogy	23d x 3.2h	415	140	300	100	42
Trilogy Garden	16.5m x 24.5m	404	–	100	100	–
Cuba	22.5m x 6.5m x 2.5m	146	32 (8 guests)	80	40	24
Park Lounge	16.4m x 6.64m x 2.6m	240	60	80	-	40

venues

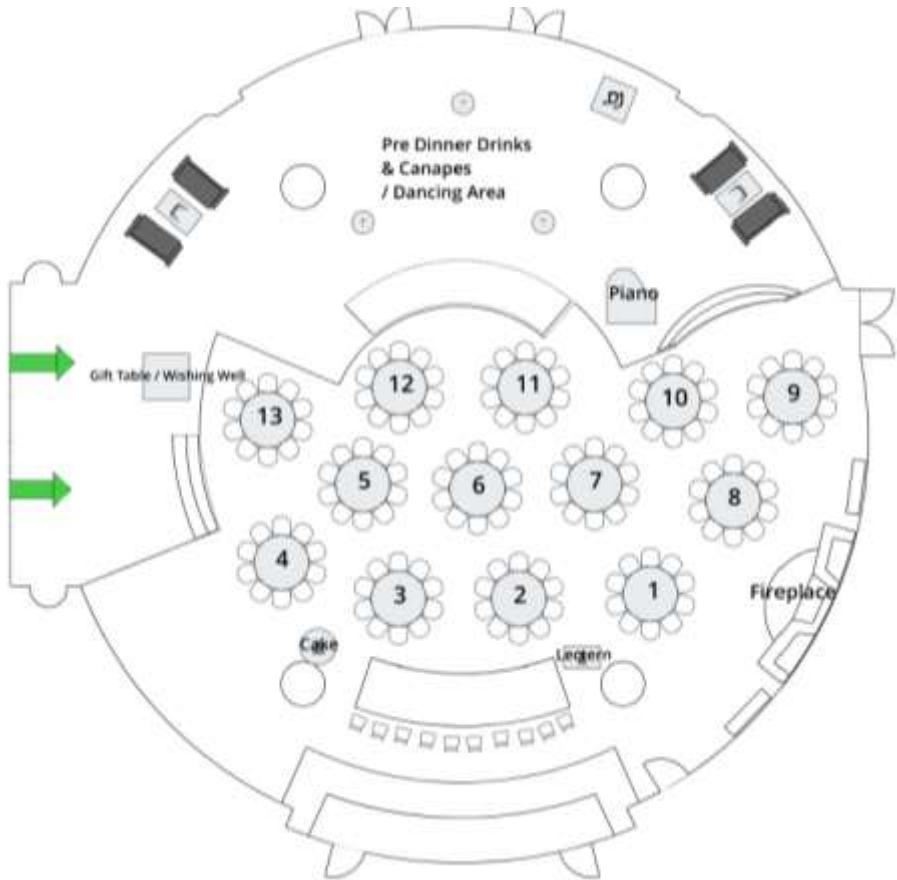
& CAPACITIES



floor
PLANS



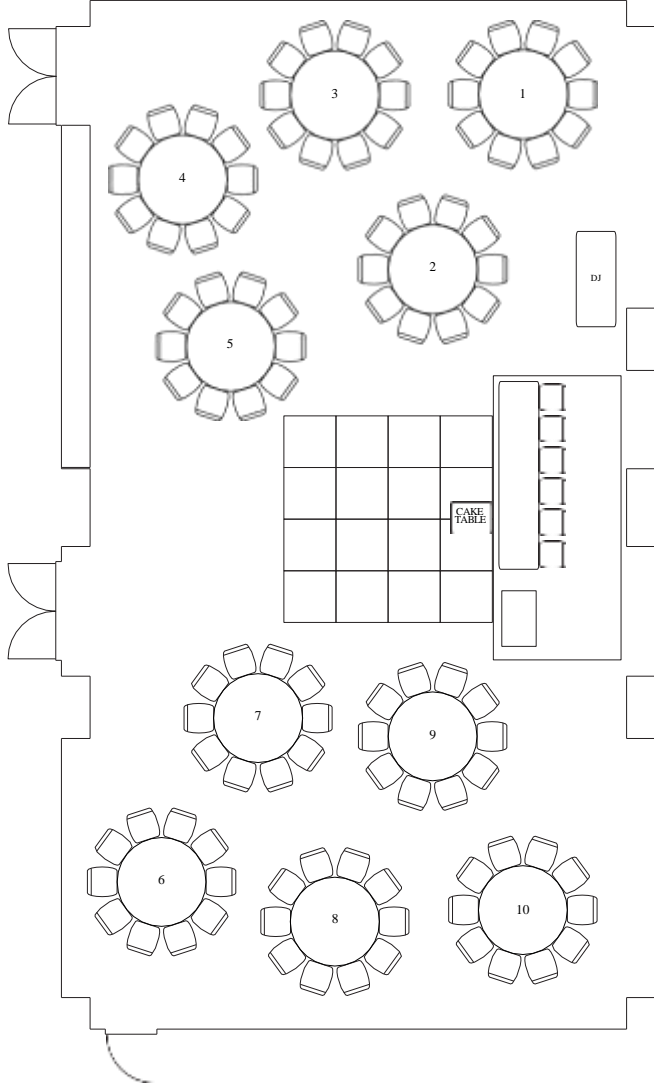
BALLROOM – 310 GUESTS



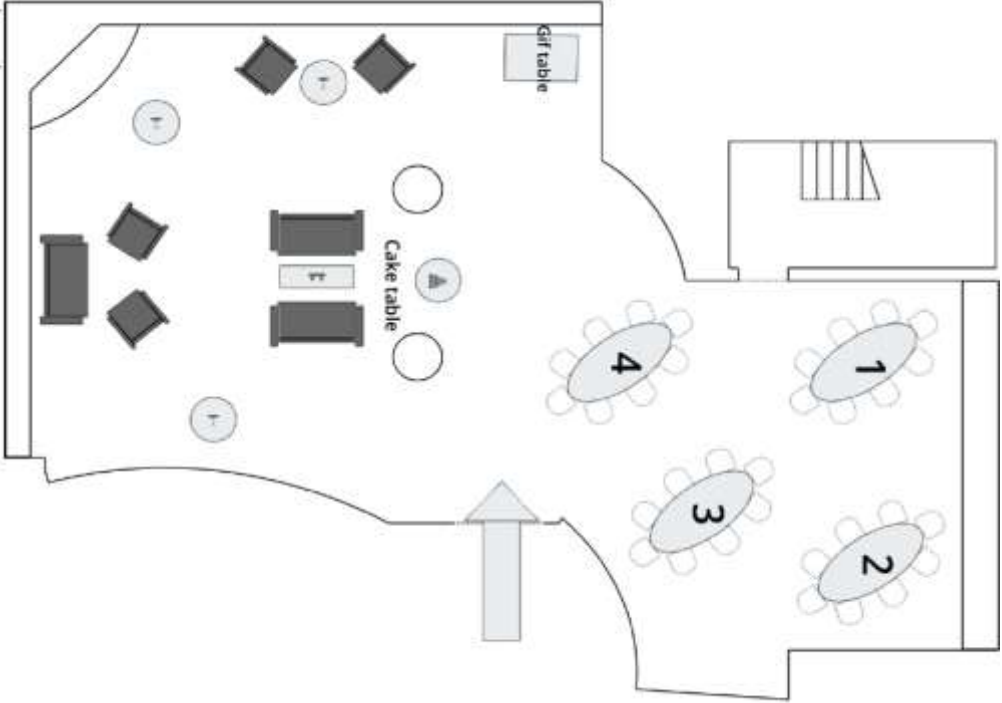
TRILOGY – 140 GUESTS



floor
PLANS



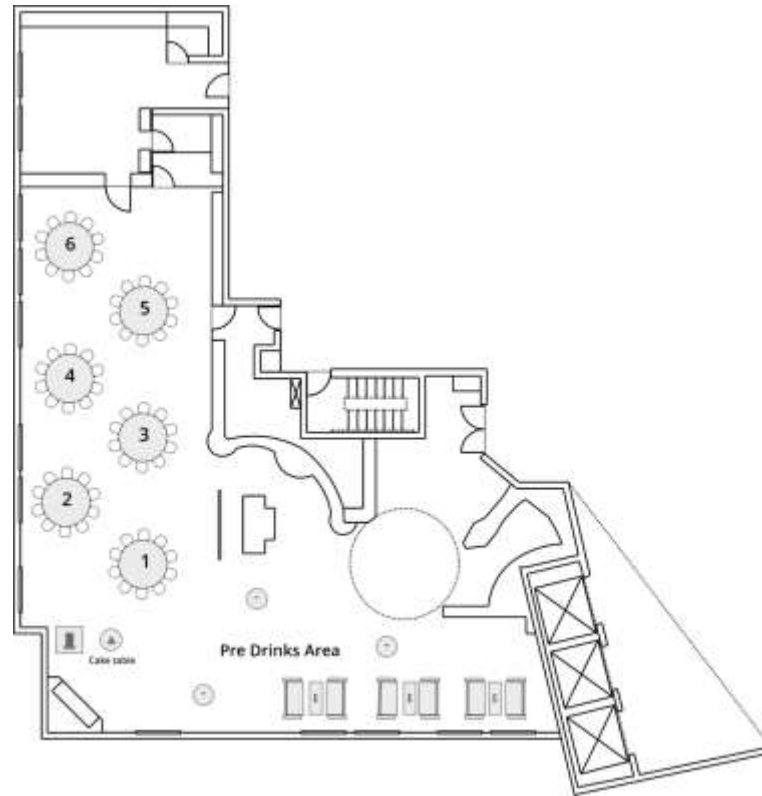
FAIRMONT - 106 GUESTS



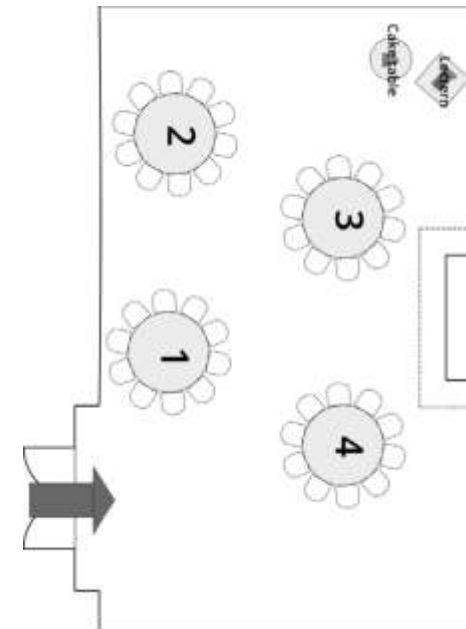
CUBA - 32 GUESTS



floor PLANS



PARK LOUNGE – 60 GUESTS



LIBRARY – 40 GUESTS





your DAY

YOUR STORY. OUR PROMISE.

Your wedding is a defining chapter in your love story. At Park Hyatt Melbourne, our promise is to elevate every moment. We curate an ambiance where your love story shines, ensuring your day unfolds with elegance and grace.



KING VIEW DELUXE



PARK SUITE



TERRACE SUITE



IN-ROOM BREAKFAST

reception

GUIDE

TIMED TO PERFECTION

6:00pm:	Pre dinner drinks and canapés served	8:15pm:	Main course served
6:30pm:	Room Reveal / Guests Seated	8:50pm:	Speeches
6:45pm:	Welcome address / Housekeeping by MC	9:20pm:	Father/ Daughter dance followed by Dance bracket 2
6:50pm:	Bridal party entrance	10:00pm:	Dessert
7:00pm:	Cutting of the cake, champagne toast and photo opportunity	10:15pm:	Tea, coffee, friandise and wedding cake served to the table
7:05pm:	Entrée served	10:15pm:	Dance bracket 3
7:30pm:	MC announces first dance	11:15pm:	Bouquet / Garter toss
7:35pm:	First Dance followed by Dance bracket 1	11:45pm:	Farewell
		12:00am:	Wedding concludes – guest depart

EXAMPLE ONLY





the LOCATION

CAPTURE TIMELESS MOMENTS

Overlooking St. Patrick's Cathedral and Fitzroy Gardens, Park Hyatt Melbourne provides an idyllic backdrop for post-ceremony photography. Surrounded by historic elm trees and the city's iconic structures, the hotel offers a blend of luxury and timeless charm, ensuring every captured moment is unforgettable.



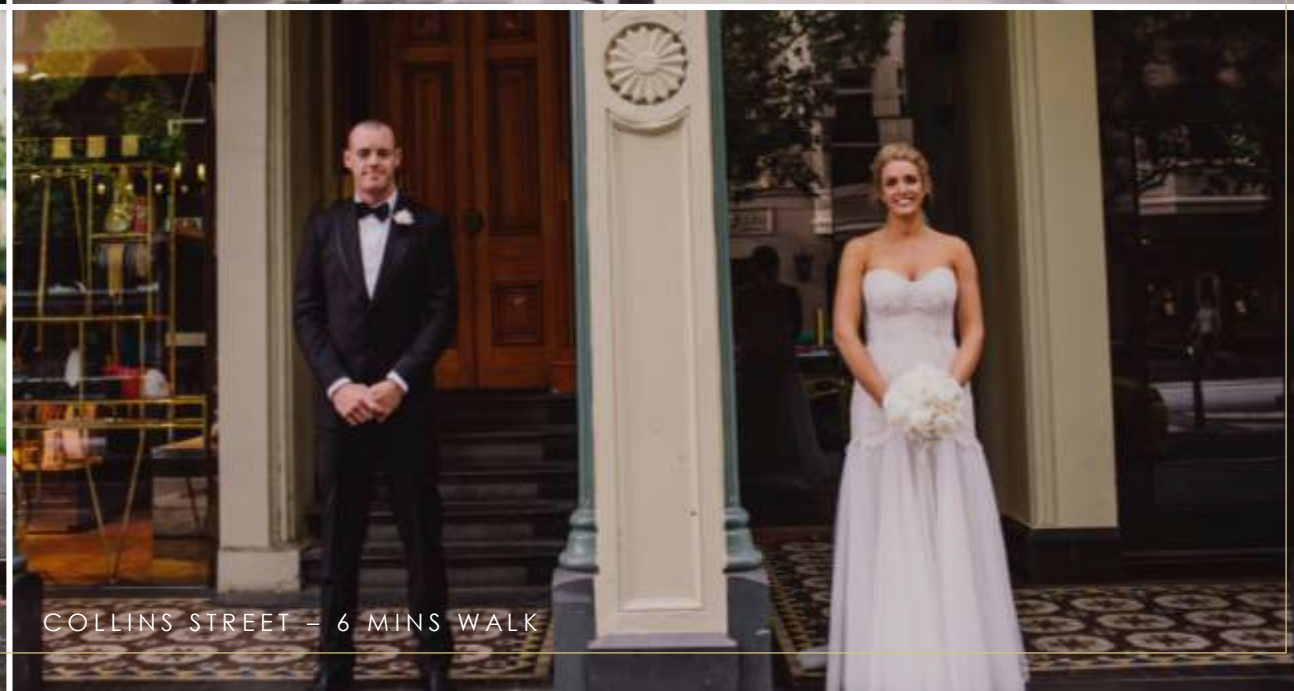
BALLROOM FLOOR OF HOTEL



TREASURY PLACE- 3 MINS WALK FROM HOTEL



TREASURY GARDENS – 2 MINS WALK



COLLINS STREET – 6 MINS WALK

FOOD & BEVERAGE

Q: Do I get a menu tasting included in my package?

A: Of course. A tasting of selected menu items will be scheduled 6-8 weeks prior to your wedding for up to 6 people. At that time, we can make any necessary adjustments. Your menu tasting can be scheduled Tuesday to Friday between 2.00 pm to 4.00 pm only. A minimum of 2 weeks' notice is required for menu tastings.

Q: Is there a surcharge for late dietary requirements?

A: A Late Dietary Requirements surcharge applies for any new requests made within 5 working days of the event start time, \$30.00 per entrée or dessert, and \$50.00 per main course per person if applicable to your event menu.

Q: Once the reception has concluded, is there somewhere that I can have a drink with my guests?

A: Absolutely. Our radii bar is available should you and your guests wish to have a drink after the reception. This is based on a minimum catering spend being met.

Q: Can I host a morning-after brunch at the hotel?

A: Certainly. We will be more than happy to discuss hosting a morning-after brunch for you and your guests in an available private dining room.

Q: When are my final numbers due?

A: Final numbers are due seven (7) working days prior to your wedding day.

Q: Do you provide children's meals?

A: Yes, our children's meals are available to children under 12 years old at \$85.00 per child for a three course meal, inclusive of soft drinks and juices.

GUESTS

Q: I have guests who want to stay in the hotel, is there a special rate?

A: Yes, we offer a special rate to guests attending weddings at Park Hyatt Melbourne. A rate will be given at the time of contract and is subject to availability.

Q: Is parking available for my guests?

A: Parking is available below the hotel and is operated by Wilson Parking Australia. Parking charges from Wilson Parking are not able to be charged back to Hotel master accounts. Current parking rates at Wilson parking can be found here:

<https://www.wilsonparking.com.au/parking-locations/victoria/east-melbourne/park-hyatt-car-park/>

Alternatively, valet parking through the hotel is available at \$70.00 per vehicle per day and can be charged to the event master account if required. (Note: Space cannot be guaranteed and is subject to availability).

frequent
QUESTIONS



HOTEL BOOKING

Q: Can I extend my booking past midnight?

A: You can extend your booking in the Ballroom until 1:00am. There is a \$10.00 surcharge per person, per hour plus beverage costs. Trilogy and Park Lounge functions must conclude at midnight due to its close proximity to guest rooms.

Q: Can I arrange early check-in and/or late check-out for my accommodation?

A: A request for early check-in can certainly be noted in your booking, however, please be aware that it will be subject to availability. A 12pm late check-out is included in your wedding night accommodation package.

Q: Can my guests have a late check-out the morning after the wedding?

A: The hotel's check out time is 11:00am. Your guests can make individual requests for a late-check out upon checking in.

Q: Can we have a ceremony at the hotel?

A: If you are having your reception in Trilogy, the adjoining Tuscan inspired garden is perfect for an intimate wedding ceremony. We also have a multiple venues ideal for indoor ceremony and can be booked if you have your reception here at Park Hyatt Melbourne. Please contact us for further details.

Q: How much time to I have for bump-in and bump-out?

A: Park Hyatt Melbourne packages include a two hour bump in and two hour bump out period. Should you require an extended bump in or bump out to allow for additional supplier set up and pack down requirements please speak to your Event Executive-Weddings & Social to obtain information on additional charges. Park Hyatt Melbourne may sell another event on the same day as your wedding providing that the event concludes three hours prior to your event start time.

Q: Who oversees your Audio-visual and lighting?

A: Park Hyatt Melbourne has appointed Encore Event Technologies as our preferred supplier of audio-visual. Your package outlines your inclusions of audio visual and lighting. Should you wish to arrange any additional services such as custom-built stage sets, additional lighting and engaging entertainment, Encore Event Technologies' wealth of expertise and resources can deliver on all your event needs and wildest imaginations.

For further information regarding any requirements and quotes, please contact Encore Event Technologies on 61 3 9224 1259 or email parkhyattmelbourne@encore-anzpac.com

ENTERTAINEMENT

Q: Is there a restriction to the size of band I can have?

A: There is no restriction on band size in the Ballroom, nevertheless, the stage can only accommodate a 5 piece band. For Trilogy, the maximum band size is a 3 piece only.

Q: How much do I have to pay for entertainer meals?

A: Entertainer meals are \$85.00 per person. Please note there is an additional \$10.00 charge per person if meals are served in the reception venue to cover linen costs.

PRICING

If you're enquiring for a wedding in advance of 18 months, please allow for an approximate price increase of 5-10%. All quoted prices are inclusive of GST

Please note: a surcharge is applicable on Sunday's and Public Holidays. Minimum catering spends apply dependent on the day of the week and month of the year.

CONFIRMATION AND DEPOSIT SCHEDULE

To confirm your date, a signed contract and deposit equivalent to 25% of the estimated event charges are due within 7 days of the invoice date. A deposit schedule outlining the interim payments will be outlined in your contract. Final guest numbers are due 7 working days prior to your wedding date, and final payment is due 5 working days prior.

SECURITY

Security is required for all weddings held at Park Hyatt Melbourne. Your Event Executive - Weddings & Social will advise of the number of guards required for your guest numbers. Security guards are required thirty minutes prior to your guests arrival, and thirty minutes past your guests departure. Please allow \$95.00 per hour, per security guard.



PARK HYATT MELBOURNE™

1 Parliament Square, off Parliament Place,
Melbourne, Australia 3002
melbourne.park.hyatt.com

T. +61 3 9224 1234
F. +61 3 9224 1250



A PARK HYATT WEDDING



the PARK HYATT

AN ELM FRINGED SANCTUARY

Overlooking St. Patrick's Cathedral and Fitzroy Gardens, Park Hyatt Melbourne offers exclusive luxury in the heart of the city. Surrounded by century old elm trees and some of the city's most iconic architecture, Park Hyatt Melbourne is a sanctuary distinctive in location and design, offering guests an exceptional and personalised experience.



TRILOGY CONFIGURATIONS

The Trilogy Garden offers an idyllic setting with the capacity to comfortably seat up to 100 guests amidst its lush surroundings. For indoor gatherings, the Trilogy Reception Room boasts a generous sit-down capacity for 140 guests, ensuring ample space for a memorable celebration.

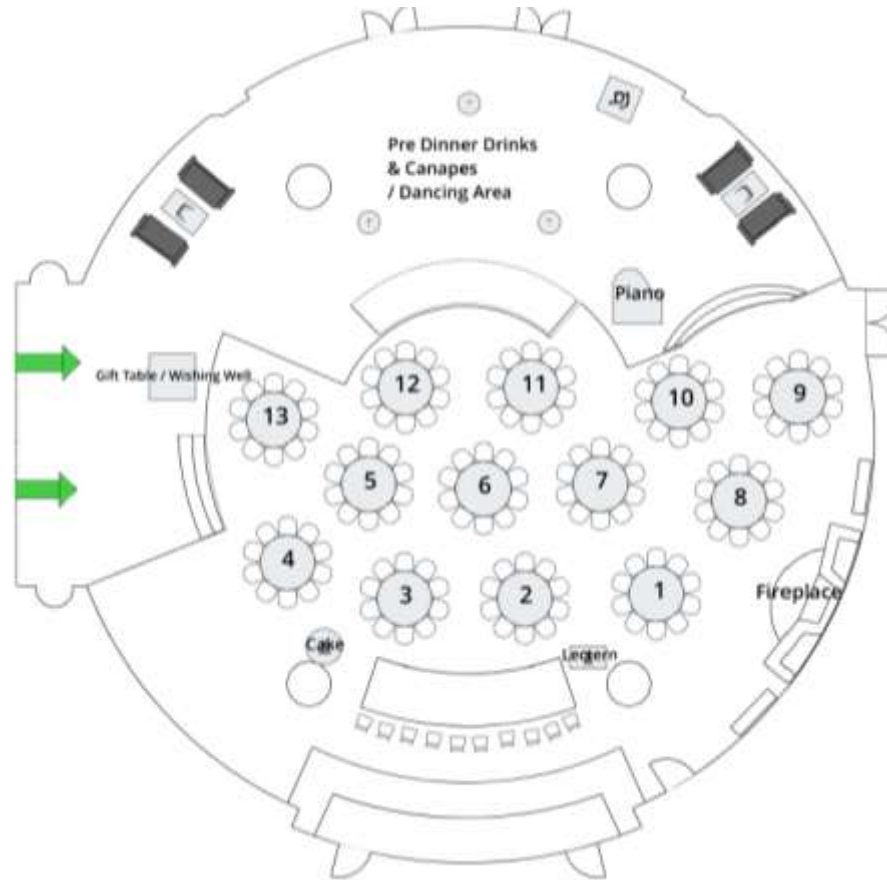


ROOM NAME	DIMENSIONS LxWxH	SQUARE METRES	BANQUET (10 GUESTS)	COCKTAIL	CEREMONY	BOARDROOM (FULLY SET)
						
Ballroom	27d x 5.5h	572	310	400	–	–
Fairmont	20m x 11m x 4.7m	220	100	180	150	48
Library	11.5m x 7m x 4.3m	80	40	50	40	24
Trilogy	23d x 3.2h	415	140	300	100	42
Trilogy Garden	16.5m x 24.5m	404	–	100	100	–
Cuba	22.5m x 6.5m x 2.5m	146	32	80	40	24
Park Lounge	16.4m x 6.64m x 2.6m	240	60	80	-	40

venues

& CAPACITIES





TRILOGY - 140 GUESTS

floor PLAN





your DAY

YOUR STORY. OUR PROMISE.

Your wedding is a defining chapter in your love story. At Park Hyatt Melbourne, our promise is to elevate every moment. We curate an ambiance where your love story shines, ensuring your day unfolds with elegance and grace.



KING VIEW DELUXE



PARK SUITE



TERRACE SUITE



IN-ROOM BREAKFAST

reception

GUIDE

TIMED TO PERFECTION

6:00pm:	Pre dinner drinks and canapés served	8:15pm:	Main course served
6:30pm:	Room Reveal / Guests Seated	8:50pm:	Speeches
6:45pm:	Welcome address / Housekeeping by MC	9:20pm:	Father/ Daughter dance followed by Dance bracket 2
6:50pm:	Bridal party entrance	10:00pm:	Dessert
7:00pm:	Cutting of the cake, champagne toast and photo opportunity	10:15pm:	Tea, coffee, friandise and wedding cake served to the table
7:05pm:	Entrée served	10:15pm:	Dance bracket 3
7:30pm:	MC announces first dance	11:15pm:	Bouquet / Garter toss
7:35pm:	First Dance followed by Dance bracket 1	11:45pm:	Farewell
		12:00am:	Wedding concludes – guest depart

EXAMPLE ONLY





the LOCATION

CAPTURE TIMELESS MOMENTS

Overlooking St. Patrick's Cathedral and Fitzroy Gardens, Park Hyatt Melbourne provides an idyllic backdrop for post-ceremony photography. Surrounded by historic elm trees and the city's iconic structures, the hotel offers a blend of luxury and timeless charm, ensuring every captured moment is unforgettable.



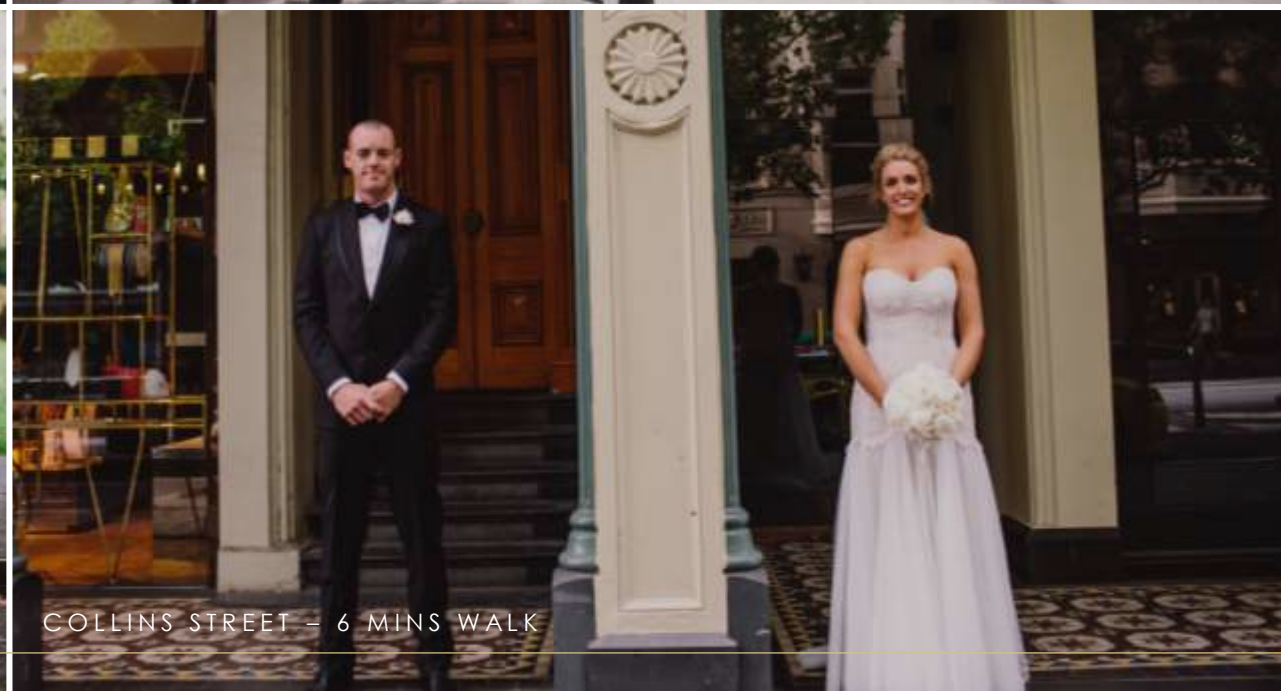
BALLROOM FLOOR OF HOTEL



TREASURY PLACE- 3 MINS WALK FROM HOTEL



TREASURY GARDENS – 2 MINS WALK



COLLINS STREET – 6 MINS WALK

FOOD & BEVERAGE

Q: Do I get a menu tasting included in my package?

A: Of course. A tasting of selected menu items will be scheduled 6-8 weeks prior to your wedding for up to 6 people. At that time, we can make any necessary adjustments. Your menu tasting can be scheduled Tuesday to Friday between 2.00 pm to 4.00 pm only. A minimum of 2 weeks' notice is required for menu tastings.

Q: Is there a surcharge for late dietary requirements?

A: A Late Dietary Requirements surcharge applies for any new requests made within 5 working days of the event start time, \$30.00 per entrée or dessert, and \$50.00 per main course per person if applicable to your event menu.

Q: Once the reception has concluded, is there somewhere that I can have a drink with my guests?

A: Absolutely. Our radii bar is available should you and your guests wish to have a drink after the reception. This is based on a minimum catering spend being met.

Q: Can I host a morning-after brunch at the hotel?

A: Certainly. We will be more than happy to discuss hosting a morning-after brunch for you and your guests in an available private dining room.

Q: When are my final numbers due?

A: Final numbers are due seven (7) working days prior to your wedding day.

Q: Do you provide children's meals?

A: Yes, our children's meals are available to children under 12 years old at \$85.00 per child for a three course meal, inclusive of soft drinks and juices.

z

GUESTS

Q: I have guests who want to stay in the hotel, is there a special rate?

A: Yes, we offer a special rate to guests attending weddings at Park Hyatt Melbourne. A rate will be given at the time of contract and is subject to availability.

Q: Is parking available for my guests?

A: Parking is available below the hotel and is operated by Wilson Parking Australia. Parking charges from Wilson Parking are not able to be charged back to Hotel master accounts. Current parking rates at Wilson parking can be found here:

<https://www.wilsonparking.com.au/parking-locations/victoria/east-melbourne/park-hyatt-car-park/>

Alternatively, valet parking through the hotel is available at \$70.00 per vehicle per day and can be charged to the event master account if required. (Note: Space cannot be guaranteed and is subject to availability).

frequent
QUESTIONS



HOTEL BOOKING

Q: Can I extend my booking past midnight?

A: You can extend your booking in the Ballroom until 1:00am. There is a \$10.00 surcharge per person, per hour plus beverage costs. Trilogy and Park Lounge functions must conclude at midnight due to its close proximity to guest rooms.

Q: Can I arrange early check-in and/or late check-out for my accommodation?

A: A request for early check-in can certainly be noted in your booking, however, please be aware that it will be subject to availability. A 12pm late check-out is included in your wedding night accommodation package.

Q: Can my guests have a late check-out the morning after the wedding?

A: The hotel's check out time is 11:00am. Your guests can make individual requests for a late-check out upon checking in.

Q: Can we have a ceremony at the hotel?

A: If you are having your reception in Trilogy, the adjoining Tuscan inspired garden is perfect for an intimate wedding ceremony. We also have a multiple venues ideal for indoor ceremony and can be booked if you have your reception here at Park Hyatt Melbourne. Please contact us for further details.

Q: How much time to I have for bump-in and bump-out?

A: Park Hyatt Melbourne packages include a two hour bump in and two hour bump out period. Should you require an extended bump in or bump out to allow for additional supplier set up and pack down requirements please speak to your Event Executive-Weddings & Social to obtain information on additional charges. Park Hyatt Melbourne may sell another event on the same day as your wedding providing that the event concludes three hours prior to your event start time.

Q: Who oversees your Audio-visual and lighting?

A: Park Hyatt Melbourne has appointed Encore Event Technologies as our preferred supplier of audio-visual. Your package outlines your inclusions of audio visual and lighting. Should you wish to arrange any additional services such as custom-built stage sets, additional lighting and engaging entertainment, Encore Event Technologies' wealth of expertise and resources can deliver on all your event needs and wildest imaginations.

For further information regarding any requirements and quotes, please contact Encore Event Technologies on 61 3 9224 1259 or email parkhyattmelbourne@encore-anzpac.com

ENTERTAINEMENT

Q: Is there a restriction to the size of band I can have?

A: There is no restriction on band size in the Ballroom, nevertheless, the stage can only accommodate a 5 piece band. For Trilogy, the maximum band size is a 3 piece only.

Q: How much do I have to pay for entertainer meals?

A: Entertainer meals are \$85.00 per person. Please note there is an additional \$10.00 charge per person if meals are served in the reception venue to cover linen costs.

PRICING

If you're enquiring for a wedding in advance of 18 months, please allow for an approximate price increase of 5-10%. All quoted prices are inclusive of GST

Please note: a surcharge is applicable on Sunday's and Public Holidays. Minimum catering spends apply dependent on the day of the week and month of the year.

CONFIRMATION AND DEPOSIT SCHEDULE

To confirm your date, a signed contract and deposit equivalent to 25% of the estimated event charges are due within 7 days of the invoice date. A deposit schedule outlining the interim payments will be outlined in your contract. Final guest numbers are due 7 working days prior to your wedding date, and final payment is due 5 working days prior.

SECURITY

Security is required for all weddings held at Park Hyatt Melbourne. Your Event Executive - Weddings & Social will advise of the number of guards required for your guest numbers. Security guards are required thirty minutes prior to your guests arrival, and thirty minutes past your guests departure. Please allow \$95.00 per hour, per security guard.



PARK HYATT MELBOURNE™

1 Parliament Square, off Parliament Place,
Melbourne, Australia 3002
melbourne.park.hyatt.com

T. +61 3 9224 1234
F. +61 3 9224 1250



A PARK HYATT WEDDING



the PARK HYATT

AN ELM FRINGED SANCTUARY

Overlooking St. Patrick's Cathedral and Fitzroy Gardens, Park Hyatt Melbourne offers exclusive luxury in the heart of the city. Surrounded by century old elm trees and some of the city's most iconic architecture, Park Hyatt Melbourne is a sanctuary distinctive in location and design, offering guests an exceptional and personalised experience.



BALLROOM CONFIGURATIONS

The enchanting ballroom unfolds a fairy-tale setting for your wedding, seating up to 310 guests in refined elegance for a banquet to remember. Meanwhile, the ballroom foyer, with its radiant charm, offers an enchanting stage for capturing those precious wedding moments and welcomes your guests to indulge in pre-ceremony drinks and canapés.

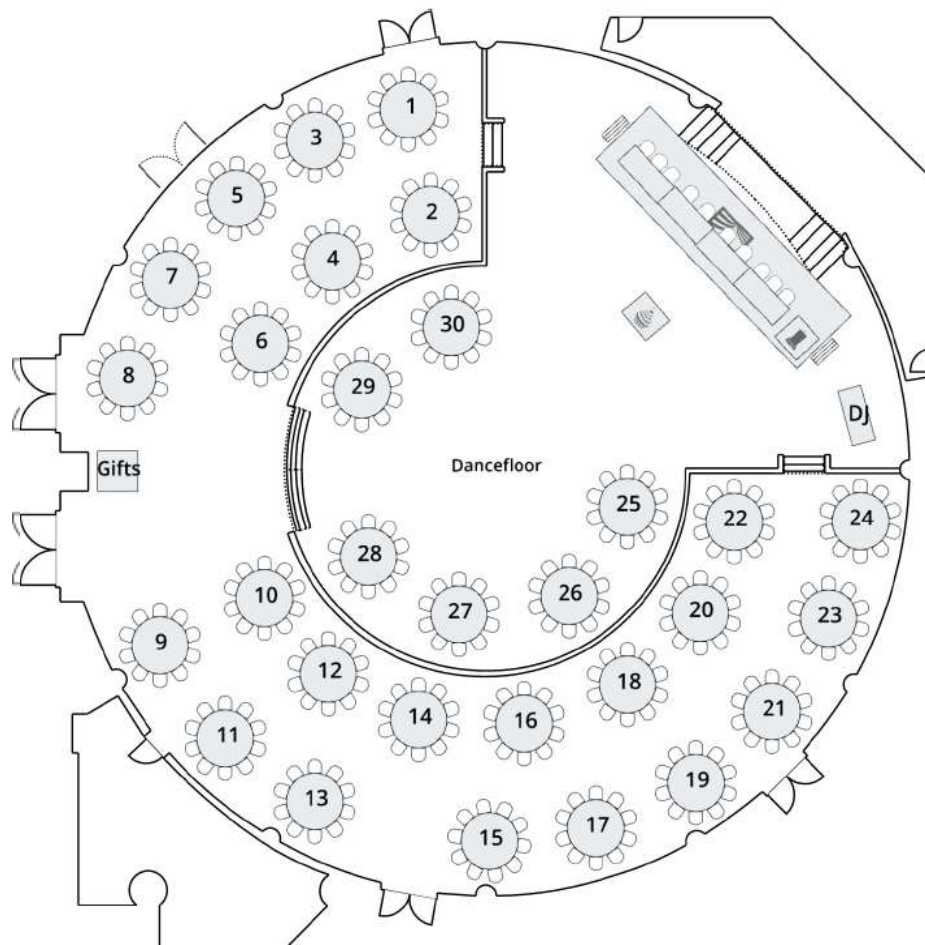


ROOM NAME	DIMENSIONS LxWxH	SQUARE METRES	BANQUET (10 GUESTS)	COCKTAIL	CEREMONY	BOARDROOM (FULLY SET)
						
Ballroom	27d x 5.5h	572	310	400	–	–
Fairmont	20m x 11m x 4.7m	220	100	180	150	48
Library	11.5m x 7m x 4.3m	80	40	50	40	24
Trilogy	23d x 3.2h	415	140	300	100	42
Trilogy Garden	16.5m x 24.5m	404	–	100	100	–
Cuba	22.5m x 6.5m x 2.5m	146	32	80	40	24
Park Lounge	16.4m x 6.64m x 2.6m	240	60	80	-	40

venues

& CAPACITIES





BALLROOM - 310 GUESTS

floor PLAN





our PACKAGES

YOUR STORY. OUR PROMISE

In the heart of Melbourne, Park Hyatt transforms dreams into reality. With packages tailored to every dream and desire, our wedding specialists weave romance into every detail, promising an enchanting celebration that lingers in hearts forever.



your DAY

YOUR STORY. OUR PROMISE.

Your wedding is a defining chapter in your love story. At Park Hyatt Melbourne, our promise is to elevate every moment. We curate an ambiance where your love story shines, ensuring your day unfolds with elegance and grace.



KING VIEW DELUXE



PARK SUITE



TERRACE SUITE



IN-ROOM BREAKFAST

reception

GUIDE

TIMED TO PERFECTION

6:00pm:	Pre dinner drinks and canapés served	8:15pm:	Main course served
6:30pm:	Room Reveal / Guests Seated	8:50pm:	Speeches
6:45pm:	Welcome address / Housekeeping by MC	9:20pm:	Father/ Daughter dance followed by Dance bracket 2
6:50pm:	Bridal party entrance	10:00pm:	Dessert
7:00pm:	Cutting of the cake, champagne toast and photo opportunity	10:15pm:	Tea, coffee, friandise and wedding cake served to the table
7:05pm:	Entrée served	10:15pm:	Dance bracket 3
7:30pm:	MC announces first dance	11:15pm:	Bouquet / Garter toss
7:35pm:	First Dance followed by Dance bracket 1	11:45pm:	Farewell
		12:00am:	Wedding concludes – guest depart

EXAMPLE ONLY





the LOCATION

CAPTURE TIMELESS MOMENTS

Overlooking St. Patrick's Cathedral and Fitzroy Gardens, Park Hyatt Melbourne provides an idyllic backdrop for post-ceremony photography. Surrounded by historic elm trees and the city's iconic structures, the hotel offers a blend of luxury and timeless charm, ensuring every captured moment is unforgettable.



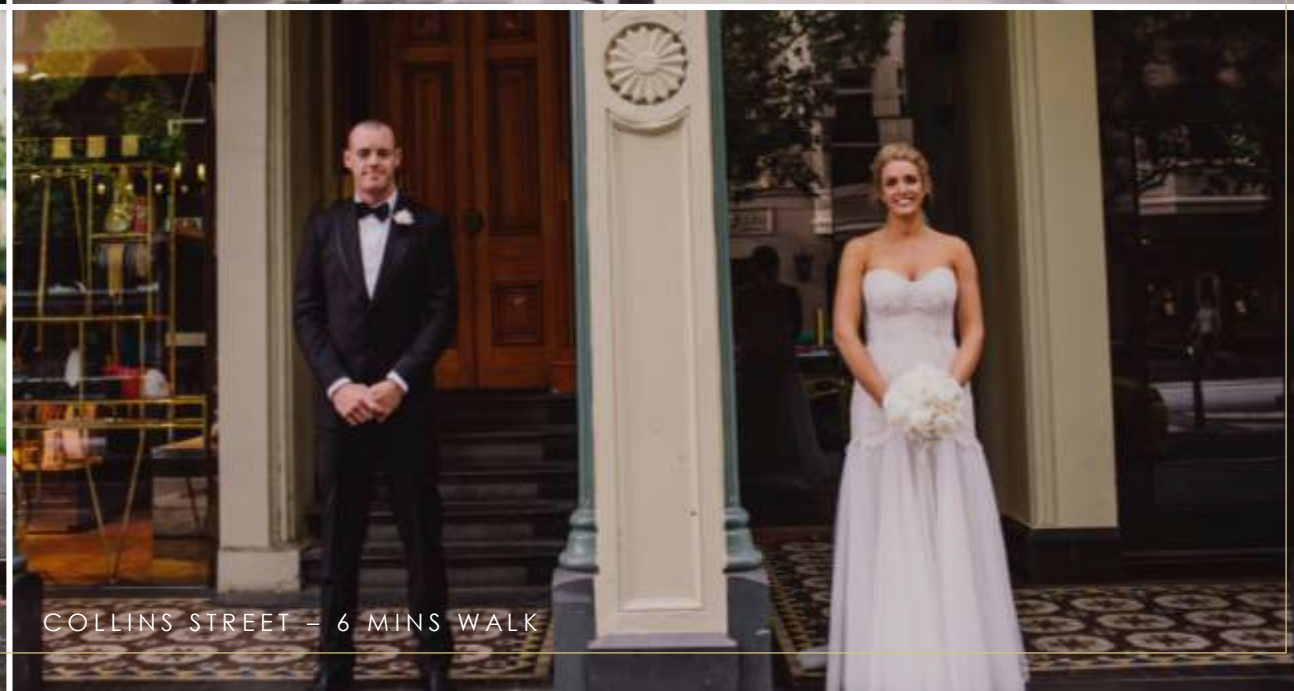
BALLROOM FLOOR OF HOTEL



TREASURY PLACE- 3 MINS WALK FROM HOTEL



TREASURY GARDENS – 2 MINS WALK



COLLINS STREET – 6 MINS WALK

FOOD & BEVERAGE

Q: Do I get a menu tasting included in my package?

A: Of course. A tasting of selected menu items will be scheduled 6–8 weeks prior to your wedding for up to 6 people. At that time, we can make any necessary adjustments. Your menu tasting can be scheduled Tuesday to Friday between 2.00 pm to 4.00 pm only. A minimum of 2 weeks' notice is required for menu tastings.

Q: Is there a surcharge for late dietary requirements?

A: A Late Dietary Requirements surcharge applies for any new requests made within 5 working days of the event start time, \$30.00 per entrée or dessert, and \$50.00 per main course per person if applicable to your event menu.

Q: Once the reception has concluded, is there somewhere that I can have a drink with my guests?

A: Absolutely. Our radii bar is available should you and your guests wish to have a drink after the reception. This is based on a minimum catering spend being met.

Q: Can I host a morning-after brunch at the hotel?

A: Certainly. We will be more than happy to discuss hosting a morning-after brunch for you and your guests in an available private dining room.

Q: When are my final numbers due?

A: Final numbers are due seven (7) working days prior to your wedding day.

Q: Do you provide children's meals?

A: Yes, our children's meals are available to children under 12 years old at \$85.00 per child for a three course meal, inclusive of soft drinks and juices.

z

GUESTS

Q: I have guests who want to stay in the hotel, is there a special rate?

A: Yes, we offer a special rate to guests attending weddings at Park Hyatt Melbourne. A rate will be given at the time of contract and is subject to availability.

Q: Is parking available for my guests?

A: Parking is available below the hotel and is operated by Wilson Parking Australia. Parking charges from Wilson Parking are not able to be charged back to Hotel master accounts. Current parking rates at Wilson parking can be found here:

<https://www.wilsonparking.com.au/parking-locations/victoria/east-melbourne/park-hyatt-car-park/>

Alternatively, valet parking through the hotel is available at \$70.00 per vehicle per day and can be charged to the event master account if required. (Note: Space cannot be guaranteed and is subject to availability).

frequent
QUESTIONS



HOTEL BOOKING

Q: Can I extend my booking past midnight?

A: You can extend your booking in the Ballroom until 1:00am. There is a \$10.00 surcharge per person, per hour plus beverage costs. Trilogy and Park Lounge functions must conclude at midnight due to its close proximity to guest rooms.

Q: Can I arrange early check-in and/or late check-out for my accommodation?

A: A request for early check-in can certainly be noted in your booking, however, please be aware that it will be subject to availability. A 12pm late check-out is included in your wedding night accommodation package.

Q: Can my guests have a late check-out the morning after the wedding?

A: The hotel's check out time is 11:00am. Your guests can make individual requests for a late-check out upon checking in.

Q: Can we have a ceremony at the hotel?

A: If you are having your reception in Trilogy, the adjoining Tuscan inspired garden is perfect for an intimate wedding ceremony. We also have a multiple venues ideal for indoor ceremony and can be booked if you have your reception here at Park Hyatt Melbourne. Please contact us for further details.

Q: How much time to I have for bump-in and bump-out?

A: Park Hyatt Melbourne packages include a two hour bump in and two hour bump out period. Should you require an extended bump in or bump out to allow for additional supplier set up and pack down requirements please speak to your Event Executive-Weddings & Social to obtain information on additional charges. Park Hyatt Melbourne may sell another event on the same day as your wedding providing that the event concludes three hours prior to your event start time.

Q: Who oversees your Audio-visual and lighting?

A: Park Hyatt Melbourne has appointed Encore Event Technologies as our preferred supplier of audio-visual. Your package outlines your inclusions of audio visual and lighting. Should you wish to arrange any additional services such as custom-built stage sets, additional lighting and engaging entertainment, Encore Event Technologies' wealth of expertise and resources can deliver on all your event needs and wildest imaginations.

For further information regarding any requirements and quotes, please contact Encore Event Technologies on 61 3 9224 1259 or email parkhyattmelbourne@encore-anzpac.com

ENTERTAINEMENT

Q: Is there a restriction to the size of band I can have?

A: There is no restriction on band size in the Ballroom, nevertheless, the stage can only accommodate a 5 piece band. For Trilogy, the maximum band size is a 3 piece only.

Q: How much do I have to pay for entertainer meals?

A: Entertainer meals are \$85.00 per person. Please note there is an additional \$10.00 charge per person if meals are served in the reception venue to cover linen costs.

PRICING

If you're enquiring for a wedding in advance of 18 months, please allow for an approximate price increase of 5-10%. All quoted prices are inclusive of GST

Please note: a surcharge is applicable on Sunday's and Public Holidays. Minimum catering spends apply dependent on the day of the week and month of the year.

CONFIRMATION AND DEPOSIT SCHEDULE

To confirm your date, a signed contract and deposit equivalent to 25% of the estimated event charges are due within 7 days of the invoice date. A deposit schedule outlining the interim payments will be outlined in your contract. Final guest numbers are due 7 working days prior to your wedding date, and final payment is due 5 working days prior.

SECURITY

Security is required for all weddings held at Park Hyatt Melbourne. Your Event Executive - Weddings & Social will advise of the number of guards required for your guest numbers. Security guards are required thirty minutes prior to your guests arrival, and thirty minutes past your guests departure. Please allow \$95.00 per hour, per security guard.



PARK HYATT MELBOURNE™

1 Parliament Square, off Parliament Place,
Melbourne, Australia 3002
melbourne.park.hyatt.com

T. +61 3 9224 1234
F. +61 3 9224 1250



A PARK HYATT WEDDING



the PARK HYATT

AN ELM FRINGED SANCTUARY

Overlooking St. Patrick's Cathedral and Fitzroy Gardens, Park Hyatt Melbourne offers exclusive luxury in the heart of the city. Surrounded by century old elm trees and some of the city's most iconic architecture, Park Hyatt Melbourne is a sanctuary distinctive in location and design, offering guests an exceptional and personalised experience.





FAIRMONT - 100 SIT DOWN GUESTS



CUBA - 32 SIT DOWN GUESTS



FAIRMONT FOYER



RADII BAR



LIBRARY – ROUND TABLES



PARK LOUNGE – TABLE SET UP



LIBRARY – BOARD TABLE



PARK LOUNGE – COCKTAIL SETUP

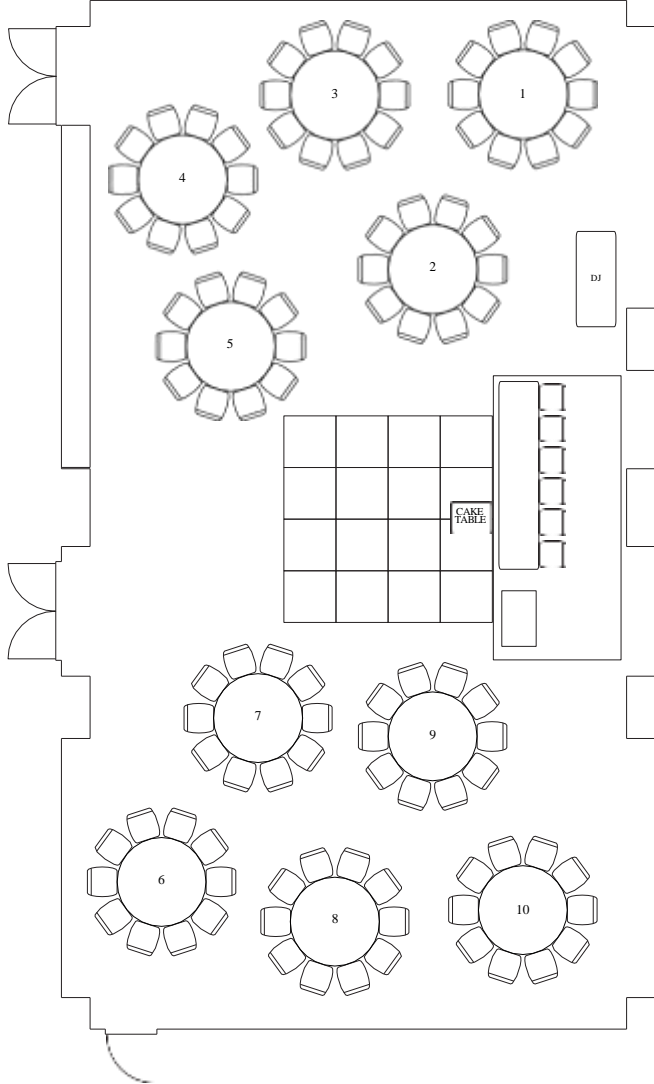
ROOM NAME	DIMENSIONS LxWxH	SQUARE METRES	BANQUET (10 GUESTS)	COCKTAIL	CEREMONY	BOARDROOM (FULLY SET)
						
Ballroom	27d x 5.5h	572	310	400	–	–
Fairmont	20m x 11m x 4.7m	220	100	180	150	48
Library	11.5m x 7m x 4.3m	80	40	50	40	24
Trilogy	23d x 3.2h	415	140	300	100	42
Trilogy Garden	16.5m x 24.5m	404	–	100	100	–
Cuba	22.5m x 6.5m x 2.5m	146	32	80	40	24
Park Lounge	16.4m x 6.64m x 2.6m	240	60	80	-	40

venues

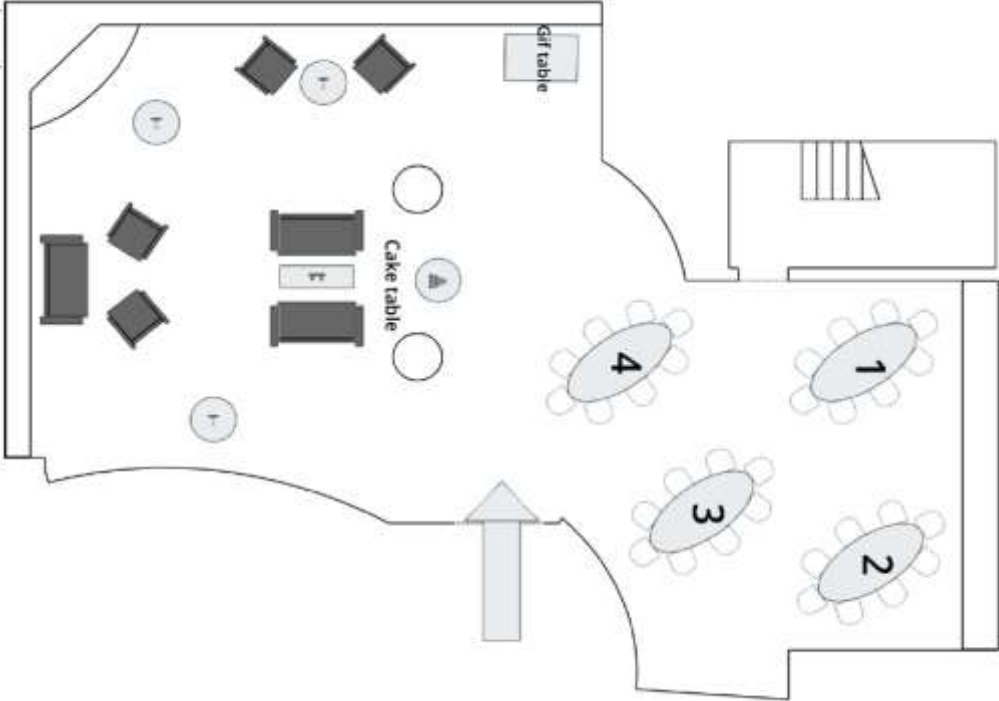
& CAPACITIES



floor
PLANS



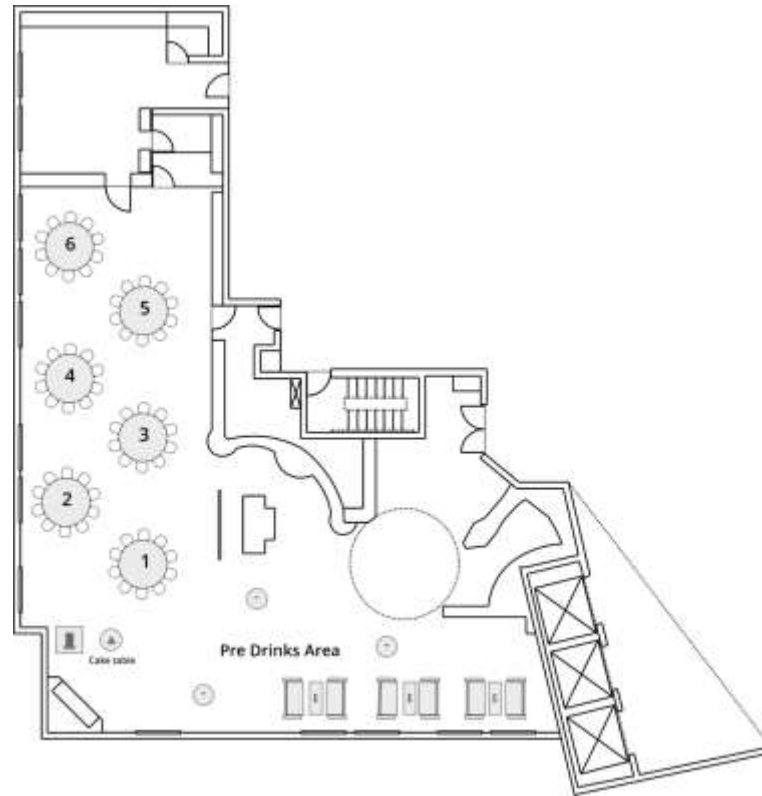
FAIRMONT - 106 GUESTS



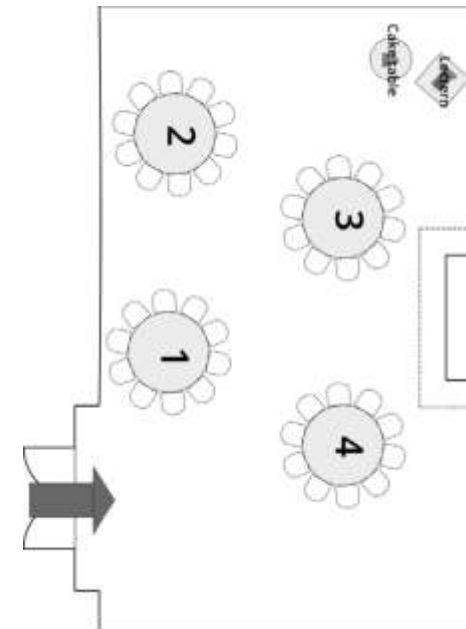
CUBA - 32 GUESTS



floor PLANS



PARK LOUNGE – 60 GUESTS



LIBRARY – 40 GUESTS



your DAY

YOUR STORY. OUR PROMISE.

Your wedding is a defining chapter in your love story. At Park Hyatt Melbourne, our promise is to elevate every moment. We curate an ambiance where your love story shines, ensuring your day unfolds with elegance and grace.





KING VIEW DELUXE



PARK SUITE



TERRACE SUITE



IN-ROOM BREAKFAST

reception

GUIDE

TIMED TO PERFECTION

6:00pm:	Pre dinner drinks and canapés served	8:15pm:	Main course served
6:30pm:	Room Reveal / Guests Seated	8:50pm:	Speeches
6:45pm:	Welcome address / Housekeeping by MC	9:20pm:	Father/ Daughter dance followed by Dance bracket 2
6:50pm:	Bridal party entrance	10:00pm:	Dessert
7:00pm:	Cutting of the cake, champagne toast and photo opportunity	10:15pm:	Tea, coffee, friandise and wedding cake served to the table
7:05pm:	Entrée served	10:15pm:	Dance bracket 3
7:30pm:	MC announces first dance	11:15pm:	Bouquet / Garter toss
7:35pm:	First Dance followed by Dance bracket 1	11:45pm:	Farewell
		12:00am:	Wedding concludes – guest depart

EXAMPLE ONLY





the LOCATION

CAPTURE TIMELESS MOMENTS

Overlooking St. Patrick's Cathedral and Fitzroy Gardens, Park Hyatt Melbourne provides an idyllic backdrop for post-ceremony photography. Surrounded by historic elm trees and the city's iconic structures, the hotel offers a blend of luxury and timeless charm, ensuring every captured moment is unforgettable.



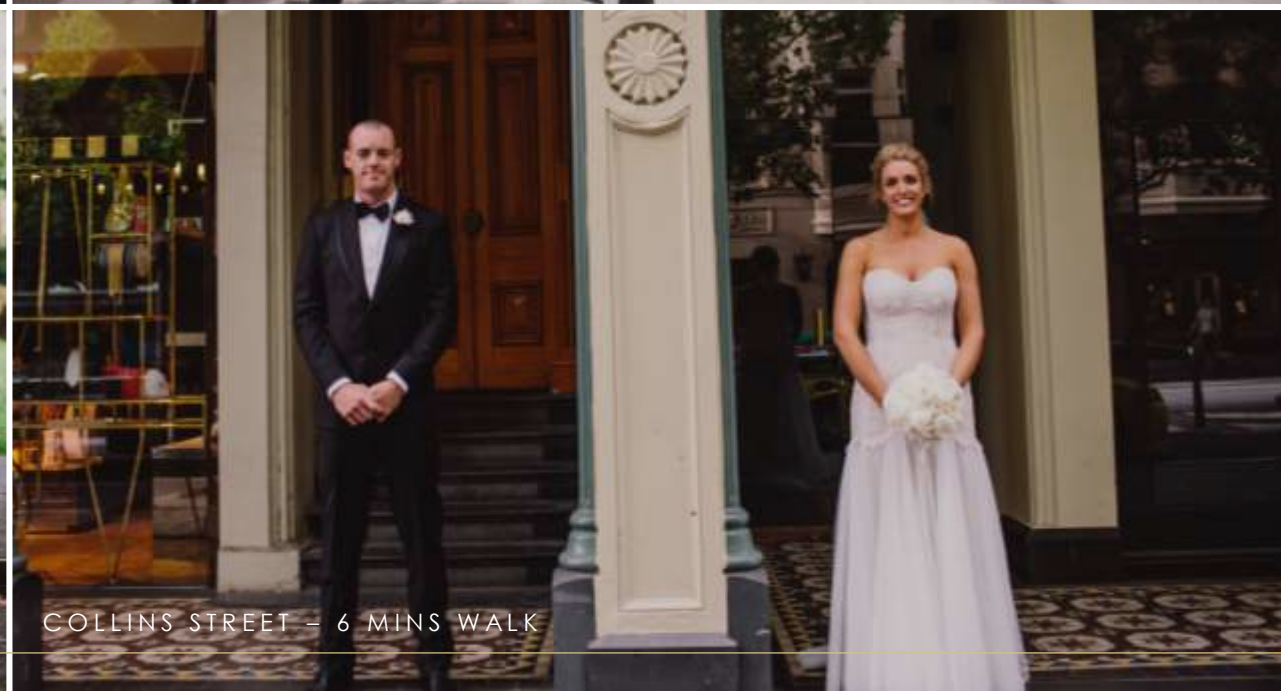
BALLROOM FLOOR OF HOTEL



TREASURY PLACE- 3 MINS WALK FROM HOTEL



TREASURY GARDENS – 2 MINS WALK



COLLINS STREET – 6 MINS WALK

FOOD & BEVERAGE

Q: Do I get a menu tasting included in my package?

A: Of course. A tasting of selected menu items will be scheduled 6-8 weeks prior to your wedding for up to 6 people. At that time, we can make any necessary adjustments. Your menu tasting can be scheduled Tuesday to Friday between 2.00 pm to 4.00 pm only. A minimum of 2 weeks' notice is required for menu tastings.

Q: Is there a surcharge for late dietary requirements?

A: A Late Dietary Requirements surcharge applies for any new requests made within 5 working days of the event start time, \$30.00 per entrée or dessert, and \$50.00 per main course per person if applicable to your event menu.

Q: Once the reception has concluded, is there somewhere that I can have a drink with my guests?

A: Absolutely. Our radii bar is available should you and your guests wish to have a drink after the reception. This is based on a minimum catering spend being met.

Q: Can I host a morning-after brunch at the hotel?

A: Certainly. We will be more than happy to discuss hosting a morning-after brunch for you and your guests in an available private dining room.

Q: When are my final numbers due?

A: Final numbers are due seven (7) working days prior to your wedding day.

Q: Do you provide children's meals?

A: Yes, our children's meals are available to children under 12 years old at \$85.00 per child for a three course meal, inclusive of soft drinks and juices.

z

GUESTS

Q: I have guests who want to stay in the hotel, is there a special rate?

A: Yes, we offer a special rate to guests attending weddings at Park Hyatt Melbourne. A rate will be given at the time of contract and is subject to availability.

Q: Is parking available for my guests?

A: Parking is available below the hotel and is operated by Wilson Parking Australia. Parking charges from Wilson Parking are not able to be charged back to Hotel master accounts. Current parking rates at Wilson parking can be found here:

<https://www.wilsonparking.com.au/parking-locations/victoria/east-melbourne/park-hyatt-car-park/>

Alternatively, valet parking through the hotel is available at \$70.00 per vehicle per day and can be charged to the event master account if required. (Note: Space cannot be guaranteed and is subject to availability).

frequent
QUESTIONS



HOTEL BOOKING

Q: Can I extend my booking past midnight?

A: You can extend your booking in the Ballroom until 1:00am. There is a \$10.00 surcharge per person, per hour plus beverage costs. Trilogy and Park Lounge functions must conclude at midnight due to its close proximity to guest rooms.

Q: Can I arrange early check-in and/or late check-out for my accommodation?

A: A request for early check-in can certainly be noted in your booking, however, please be aware that it will be subject to availability. A 12pm late check-out is included in your wedding night accommodation package.

Q: Can my guests have a late check-out the morning after the wedding?

A: The hotel's check out time is 11:00am. Your guests can make individual requests for a late-check out upon checking in.

Q: Can we have a ceremony at the hotel?

A: If you are having your reception in Trilogy, the adjoining Tuscan inspired garden is perfect for an intimate wedding ceremony. We also have a multiple venues ideal for indoor ceremony and can be booked if you have your reception here at Park Hyatt Melbourne. Please contact us for further details.

Q: How much time to I have for bump-in and bump-out?

A: Park Hyatt Melbourne packages include a two hour bump in and two hour bump out period. Should you require an extended bump in or bump out to allow for additional supplier set up and pack down requirements please speak to your Event Executive-Weddings & Social to obtain information on additional charges. Park Hyatt Melbourne may sell another event on the same day as your wedding providing that the event concludes three hours prior to your event start time.

Q: Who oversees your Audio-visual and lighting?

A: Park Hyatt Melbourne has appointed Encore Event Technologies as our preferred supplier of audio-visual. Your package outlines your inclusions of audio visual and lighting. Should you wish to arrange any additional services such as custom-built stage sets, additional lighting and engaging entertainment, Encore Event Technologies' wealth of expertise and resources can deliver on all your event needs and wildest imaginations.

For further information regarding any requirements and quotes, please contact Encore Event Technologies on 61 3 9224 1259 or email parkhyattmelbourne@encore-anzpac.com

ENTERTAINEMENT

Q: Is there a restriction to the size of band I can have?

A: There is no restriction on band size in the Ballroom, nevertheless, the stage can only accommodate a 5 piece band. For Trilogy, the maximum band size is a 3 piece only.

Q: How much do I have to pay for entertainer meals?

A: Entertainer meals are \$85.00 per person. Please note there is an additional \$10.00 charge per person if meals are served in the reception venue to cover linen costs.

PRICING

If you're enquiring for a wedding in advance of 18 months, please allow for an approximate price increase of 5-10%. All quoted prices are inclusive of GST

Please note: a surcharge is applicable on Sunday's and Public Holidays. Minimum catering spends apply dependent on the day of the week and month of the year.

CONFIRMATION AND DEPOSIT SCHEDULE

To confirm your date, a signed contract and deposit equivalent to 25% of the estimated event charges are due within 7 days of the invoice date. A deposit schedule outlining the interim payments will be outlined in your contract. Final guest numbers are due 7 working days prior to your wedding date, and final payment is due 5 working days prior.

SECURITY

Security is required for all weddings held at Park Hyatt Melbourne. Your Event Executive - Weddings & Social will advise of the number of guards required for your guest numbers. Security guards are required thirty minutes prior to your guests arrival, and thirty minutes past your guests departure. Please allow \$95.00 per hour, per security guard.



PARK HYATT MELBOURNE™

1 Parliament Square, off Parliament Place,
Melbourne, Australia 3002
melbourne.park.hyatt.com

T. +61 3 9224 1234
F. +61 3 9224 1250



A PARK HYATT WEDDING



the PARK HYATT

AN ELM FRINGED SANCTUARY

Overlooking St. Patrick's Cathedral and Fitzroy Gardens, Park Hyatt Melbourne offers exclusive luxury in the heart of the city. Surrounded by century old elm trees and some of the city's most iconic architecture, Park Hyatt Melbourne is a sanctuary distinctive in location and design, offering guests an exceptional and personalised experience.





our VENUES

FROM GRAND TO INTIMATE

Park Hyatt Melbourne boasts Italian marble interiors and versatile venues, from the Ballroom's 310-guest capacity under a silver dome to the intimate Library for 40. With spaces like the sunlit Trilogy garden and the unique Cuba setting, weddings here start at \$10,000, offering timeless elegance.



BALLROOM – 310 SIT DOWN GUESTS



TRILOGY – 140 SIT DOWN GUESTS



BALLROOM FOYER



TRILOGY GARDEN – 100 CEREMONY GUESTS



FAIRMONT – 100 SIT DOWN GUESTS



CUBA – 32 SIT DOWN GUESTS



FAIRMONT FOYER



RADII BAR



LIBRARY – ROUND TABLES



PARK LOUNGE – TABLE SET UP



LIBRARY – BOARD TABLE



PARK LOUNGE – COCKTAIL SETUP

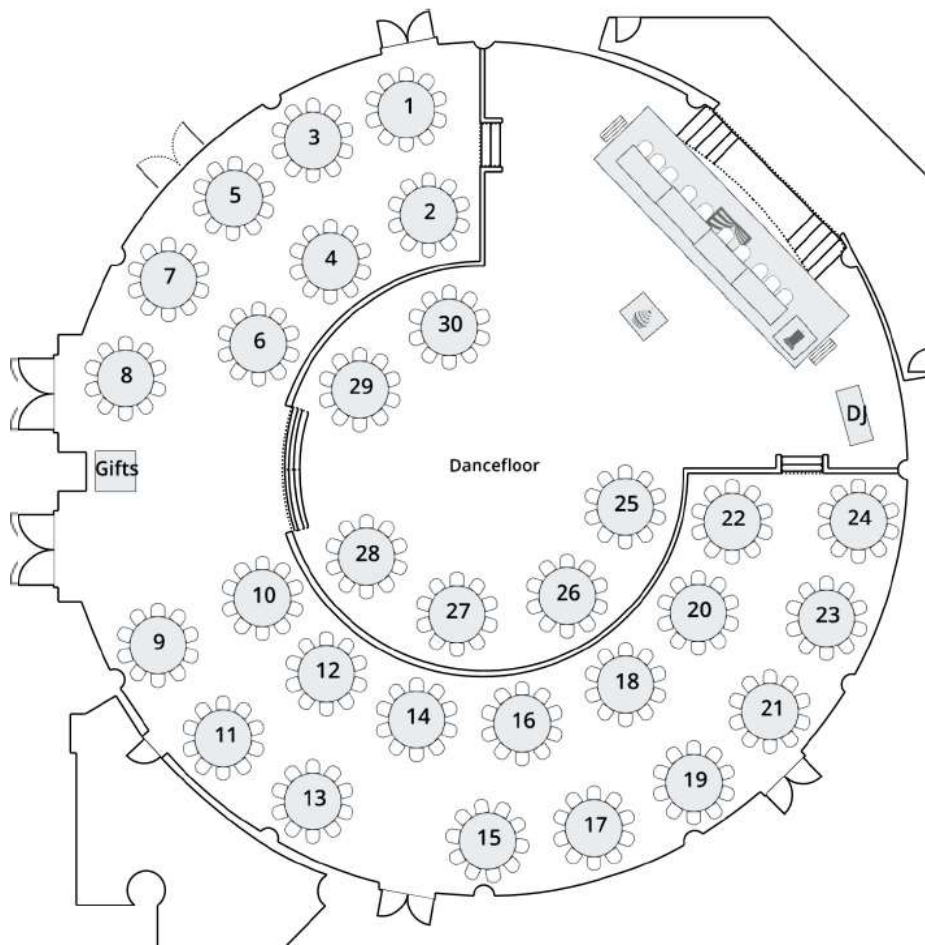
ROOM NAME	DIMENSIONS LxWxH	SQUARE METRES	BANQUET (10 GUESTS)	COCKTAIL	CEREMONY	BOARDROOM (FULLY SET)
						
Ballroom	27d x 5.5h	572	310	400	–	–
Fairmont	20m x 11m x 4.7m	220	100	180	150	48
Library	11.5m x 7m x 4.3m	80	40	50	40	24
Trilogy	23d x 3.2h	415	140	300	100	42
Trilogy Garden	16.5m x 24.5m	404	–	100	100	–
Cuba	22.5m x 6.5m x 2.5m	146	32	80	40	24
Park Lounge	16.4m x 6.64m x 2.6m	240	60	80	-	40

venues

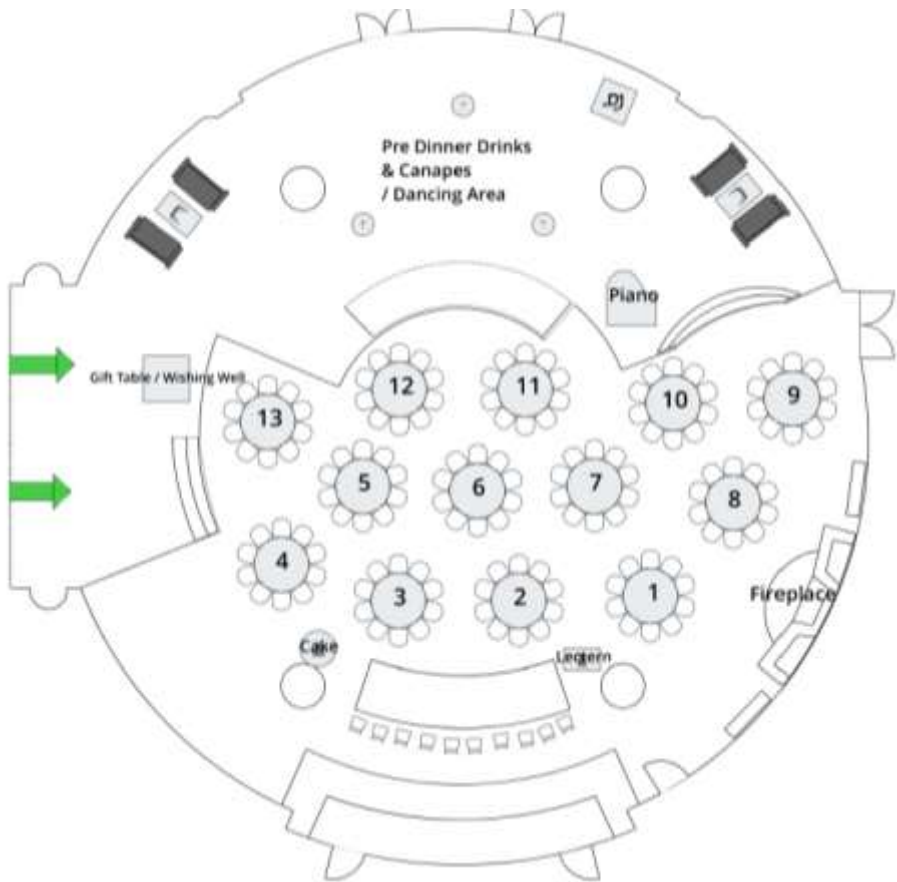
& CAPACITIES



floor
PLANS



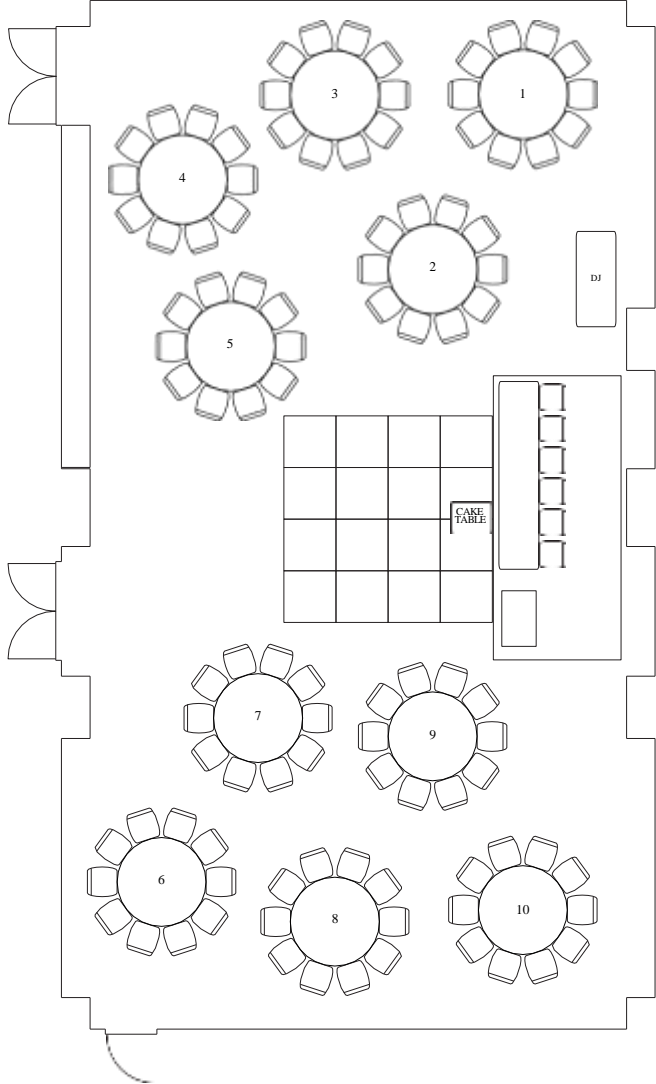
BALLROOM – 310 GUESTS



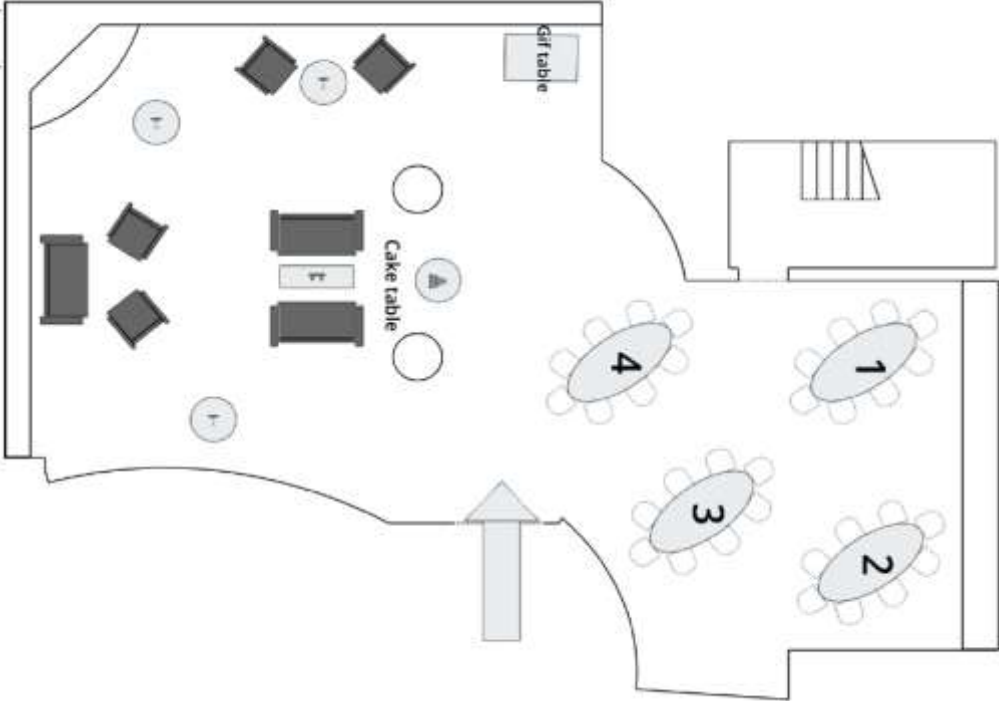
TRILOGY – 140 GUESTS



floor
PLANS



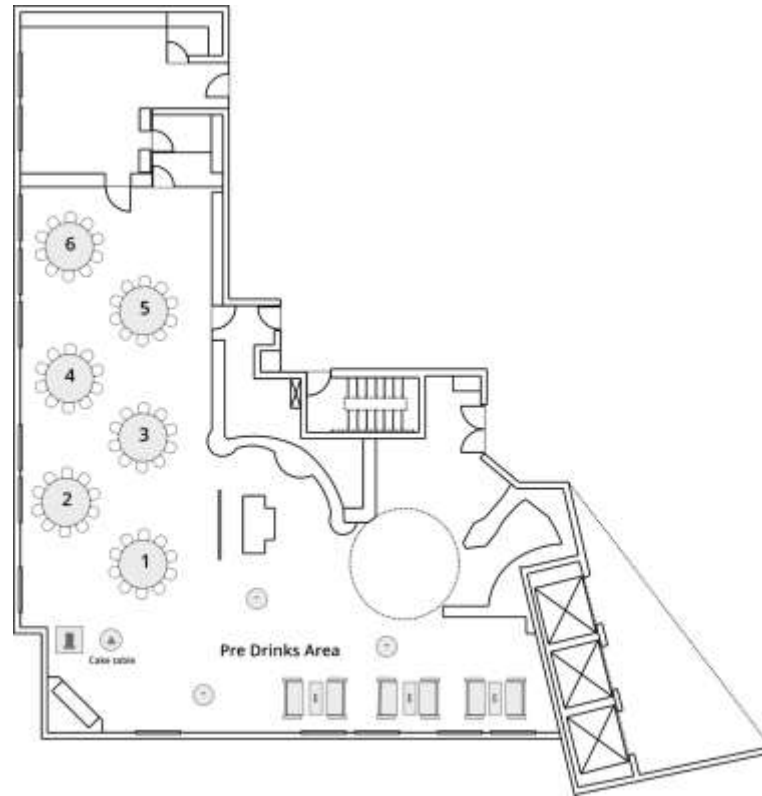
FAIRMONT - 106 GUESTS



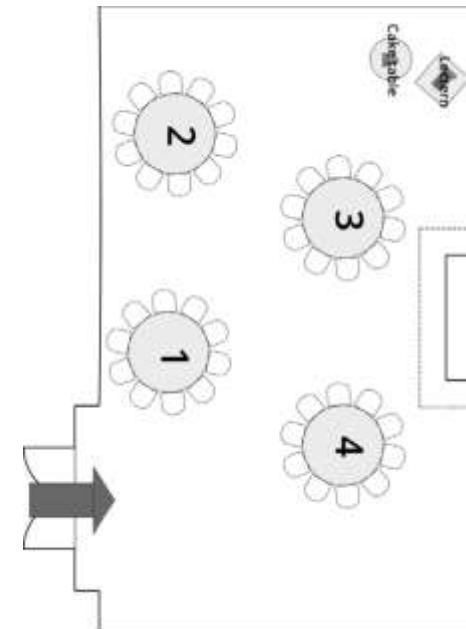
CUBA - 32 GUESTS



floor PLANS



PARK LOUNGE – 60 GUESTS



LIBRARY – 40 GUESTS





your DAY

YOUR STORY. OUR PROMISE.

Your wedding is a defining chapter in your love story. At Park Hyatt Melbourne, our promise is to elevate every moment. We curate an ambiance where your love story shines, ensuring your day unfolds with elegance and grace.



KING VIEW DELUXE



PARK SUITE



TERRACE SUITE



IN-ROOM BREAKFAST

reception

GUIDE

TIMED TO PERFECTION

6:00pm:	Pre dinner drinks and canapés served	8:15pm:	Main course served
6:30pm:	Room Reveal / Guests Seated	8:50pm:	Speeches
6:45pm:	Welcome address / Housekeeping by MC	9:20pm:	Father/ Daughter dance followed by Dance bracket 2
6:50pm:	Bridal party entrance	10:00pm:	Dessert
7:00pm:	Cutting of the cake, champagne toast and photo opportunity	10:15pm:	Tea, coffee, friandise and wedding cake served to the table
7:05pm:	Entrée served	10:15pm:	Dance bracket 3
7:30pm:	MC announces first dance	11:15pm:	Bouquet / Garter toss
7:35pm:	First Dance followed by Dance bracket 1	11:45pm:	Farewell
		12:00am:	Wedding concludes – guest depart

EXAMPLE ONLY





the LOCATION

CAPTURE TIMELESS MOMENTS

Overlooking St. Patrick's Cathedral and Fitzroy Gardens, Park Hyatt Melbourne provides an idyllic backdrop for post-ceremony photography. Surrounded by historic elm trees and the city's iconic structures, the hotel offers a blend of luxury and timeless charm, ensuring every captured moment is unforgettable.



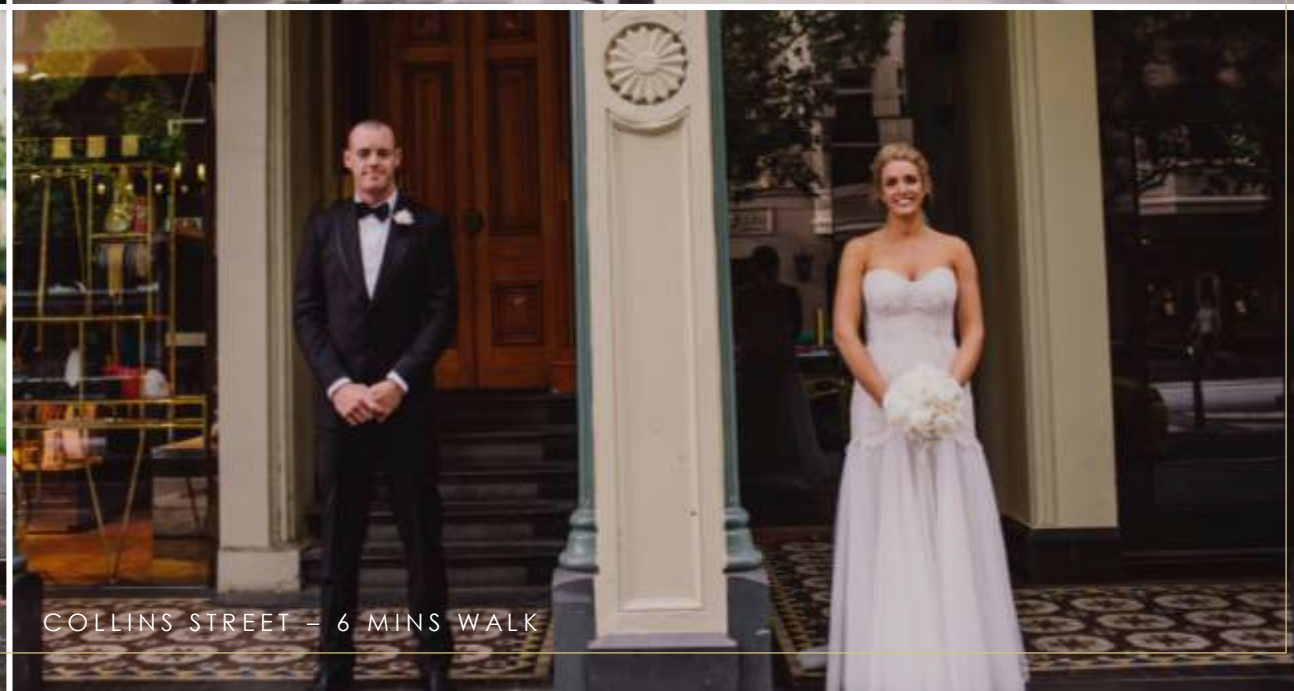
BALLROOM FLOOR OF HOTEL



TREASURY PLACE- 3 MINS WALK FROM HOTEL



TREASURY GARDENS – 2 MINS WALK



COLLINS STREET – 6 MINS WALK

FOOD & BEVERAGE

Q: Do I get a menu tasting included in my package?

A: Of course. A tasting of selected menu items will be scheduled 6-8 weeks prior to your wedding for up to 6 people. At that time, we can make any necessary adjustments. Your menu tasting can be scheduled Tuesday to Friday between 2.00 pm to 4.00 pm only. A minimum of 2 weeks' notice is required for menu tastings.

Q: Is there a surcharge for late dietary requirements?

A: A Late Dietary Requirements surcharge applies for any new requests made within 5 working days of the event start time, \$30.00 per entrée or dessert, and \$50.00 per main course per person if applicable to your event menu.

Q: Once the reception has concluded, is there somewhere that I can have a drink with my guests?

A: Absolutely. Our radii bar is available should you and your guests wish to have a drink after the reception. This is based on a minimum catering spend being met.

Q: Can I host a morning-after brunch at the hotel?

A: Certainly. We will be more than happy to discuss hosting a morning-after brunch for you and your guests in an available private dining room.

Q: When are my final numbers due?

A: Final numbers are due seven (7) working days prior to your wedding day.

Q: Do you provide children's meals?

A: Yes, our children's meals are available to children under 12 years old at \$85.00 per child for a three course meal, inclusive of soft drinks and juices.

GUESTS

Q: I have guests who want to stay in the hotel, is there a special rate?

A: Yes, we offer a special rate to guests attending weddings at Park Hyatt Melbourne. A rate will be given at the time of contract and is subject to availability.

Q: Is parking available for my guests?

A: Parking is available below the hotel and is operated by Wilson Parking Australia. Parking charges from Wilson Parking are not able to be charged back to Hotel master accounts. Current parking rates at Wilson parking can be found here:

<https://www.wilsonparking.com.au/parking-locations/victoria/east-melbourne/park-hyatt-car-park/>

Alternatively, valet parking through the hotel is available at \$70.00 per vehicle per day and can be charged to the event master account if required. (Note: Space cannot be guaranteed and is subject to availability).

frequent
QUESTIONS



HOTEL BOOKING

Q: Can I extend my booking past midnight?

A: You can extend your booking in the Ballroom until 1:00am. There is a \$10.00 surcharge per person, per hour plus beverage costs. Trilogy and Park Lounge functions must conclude at midnight due to its close proximity to guest rooms.

Q: Can I arrange early check-in and/or late check-out for my accommodation?

A: A request for early check-in can certainly be noted in your booking, however, please be aware that it will be subject to availability. A 12pm late check-out is included in your wedding night accommodation package.

Q: Can my guests have a late check-out the morning after the wedding?

A: The hotel's check out time is 11:00am. Your guests can make individual requests for a late-check out upon checking in.

Q: Can we have a ceremony at the hotel?

A: If you are having your reception in Trilogy, the adjoining Tuscan inspired garden is perfect for an intimate wedding ceremony. We also have a multiple venues ideal for indoor ceremony and can be booked if you have your reception here at Park Hyatt Melbourne. Please contact us for further details.

Q: How much time to I have for bump-in and bump-out?

A: Park Hyatt Melbourne packages include a two hour bump in and two hour bump out period. Should you require an extended bump in or bump out to allow for additional supplier set up and pack down requirements please speak to your Event Executive-Weddings & Social to obtain information on additional charges. Park Hyatt Melbourne may sell another event on the same day as your wedding providing that the event concludes three hours prior to your event start time.

Q: Who oversees your Audio-visual and lighting?

A: Park Hyatt Melbourne has appointed Encore Event Technologies as our preferred supplier of audio-visual. Your package outlines your inclusions of audio visual and lighting. Should you wish to arrange any additional services such as custom-built stage sets, additional lighting and engaging entertainment, Encore Event Technologies' wealth of expertise and resources can deliver on all your event needs and wildest imaginations.

For further information regarding any requirements and quotes, please contact Encore Event Technologies on 61 3 9224 1259 or email parkhyattmelbourne@encore-anzpac.com

ENTERTAINEMENT

Q: Is there a restriction to the size of band I can have?

A: There is no restriction on band size in the Ballroom, nevertheless, the stage can only accommodate a 5 piece band. For Trilogy, the maximum band size is a 3 piece only.

Q: How much do I have to pay for entertainer meals?

A: Entertainer meals are \$85.00 per person. Please note there is an additional \$10.00 charge per person if meals are served in the reception venue to cover linen costs.

PRICING

If you're enquiring for a wedding in advance of 18 months, please allow for an approximate price increase of 5-10%. All quoted prices are inclusive of GST

Please note: a surcharge is applicable on Sunday's and Public Holidays. Minimum catering spends apply dependent on the day of the week and month of the year.

CONFIRMATION AND DEPOSIT SCHEDULE

To confirm your date, a signed contract and deposit equivalent to 25% of the estimated event charges are due within 7 days of the invoice date. A deposit schedule outlining the interim payments will be outlined in your contract. Final guest numbers are due 7 working days prior to your wedding date, and final payment is due 5 working days prior.

SECURITY

Security is required for all weddings held at Park Hyatt Melbourne. Your Event Executive - Weddings & Social will advise of the number of guards required for your guest numbers. Security guards are required thirty minutes prior to your guests arrival, and thirty minutes past your guests departure. Please allow \$95.00 per hour, per security guard.



PARK HYATT MELBOURNE™

1 Parliament Square, off Parliament Place,
Melbourne, Australia 3002
melbourne.park.hyatt.com

T. +61 3 9224 1234
F. +61 3 9224 1250



A PARK HYATT WEDDING















PARK HYATT MELBOURNE™

1 Parliament Square, off Parliament Place,
Melbourne, Australia 3002
melbourne.park.hyatt.com

T. +61 3 9224 1234
F. +61 3 9224 1250